

LIFTING

TOMORROW

International Information Magazine of the **FASSI GROUP**

TECHNO
F2350RL-HXP

Innovative strength

The most powerful Fassi crane ever

The new F2350RL-HXP TECHNO, a revolution in lifting, is coming to the market. The first Fassi crane with 18 hydraulic extensions.

World news

Kluytmans Service, the new Fassi dealer for the Netherlands; the new Marrel, Cranab and Forez Bennes products; from Austria the versatility and efficiency of the Fassi F545RA.2.27 xe-dynamic.

In-depth

Fassi quality: precision and innovation for excellence, from the arrival of raw materials to final testing.

FASSI



Share your photos of Fassi cranes at work with us



Fassi cranes operate worldwide in new and diverse sectors and locations. Their stories speak through the images sent by dealers and clients spread over five continents and posted over several months on Instagram. In this section, we have chosen and shared the posts (with the five Fassi hashtags) that have received the most likes in the period from July to December 2024.



#fassicrane
arsisltd
126 likes



#fassicranes
fassigrufirenze
235 likes



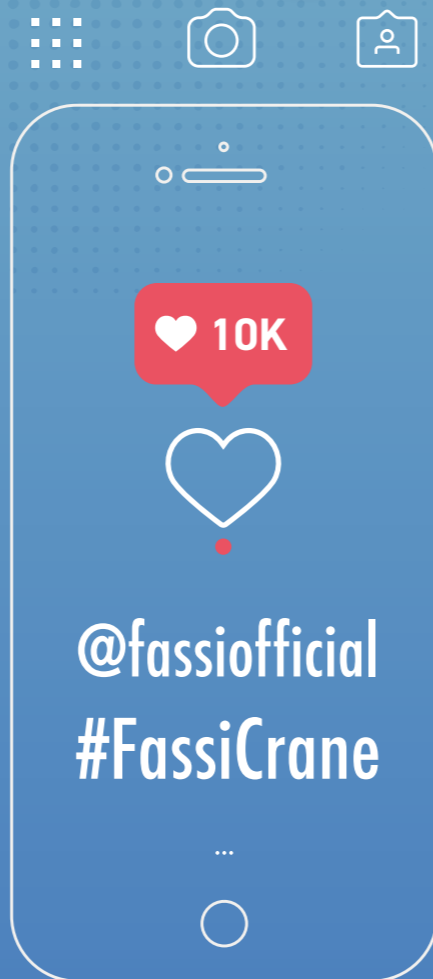
#fassifriday
fassi_de
248 likes



#fassikran
koglerkrantechnikgmbh
1093 likes



#fassigroup
fassiofficial
901 likes



Sixty Years of the Future: “Innovating Together”



The story of a company can be told in many ways—letting the past flow like an album of photographs: moments frozen in time, pages yellowed by nostalgia. But at Fassi, history is not just a mere list of past events; it is a foundation and a springboard to the future, an energy that never ceases to vibrate—like a crane lifting the past, elevating it, and carrying it into tomorrow.

Sixty years is not just a number. It is horizons gradually coming into focus, open roads where once there were boundaries: people, ambitions, ingenuity, steel, and technology fused into the same dream. It is hands that have built the future, piece by piece, never stopping, never settling. In 1965, the choice was not simply clear—it was necessary. Not to adapt, but to create. Not to follow, but to anticipate. Not to wait for change, but to be the change.

Every milestone has been a new beginning, every obstacle a push to dare even more. From the very first red crane. Yes, red—more than just a color, a mark of identity, ambition, and courage. Can red be the color of a promise? Why not, if it is sealed with passion?

That original promise has multiplied over time, always finding the strength to be kept. A continuous drive, an unstoppable engine of innovation. Because, as Franco Fassi used to say, “The most beautiful crane is always the one yet to be built.” Because the future is an open construction site, where the next step is always the one that matters most.

Sixty years later, this vision has not faded. On the contrary, it is stronger than ever. And at Bauma 2025, it takes shape in the concept Innovating Together. Because the future is never a solitary race but a weave of ingenuity and shared passions, united by common ideals and values—a bridge between those who imagine and those who build. Because innovation, at its core, means never settling for what already exists, but seeking solutions that are more efficient, more sustainable, more daring.

Bauma is the showcase of tomorrow, the place where ideas meet, challenge each other, and take shape. Here, Fassi brings not only its most advanced technologies but also the legacy of sixty years of choices, challenges, and values. To reaffirm, once again, what has always driven the company: not just observing change, but shaping it. Sixty years ago, everything began with a choice. The choice not to follow the market but to redefine it. To see opportunity where others saw boundaries. That choice, that bet, became a globally recognized excellence.

Today, that same drive to push beyond limits remains the force that guides us. With one certainty: progress is never achieved alone. It happens with those who believe in an idea, those who bring it to life, those who choose it. And above all, with those who contribute to making it even greater—by putting their talent and their work at the service of something that belongs to everyone.

For this reason, today more than ever, Innovating Together is not just a claim. It is a commitment.

Because the future is not something to wait for. It is something to build. Together.

In focus



P. 06

The new F2350RL-HXP TECHNO, the most powerful Fassi crane ever

The first Fassi crane with 18 hydraulic extensions. With the decagonal X-Design and the XF hydraulic system, it guarantees precision and fluidity.



P. 18

Fassi IoC: complete crane control on one platform

With the Internet of Cranes (IoC), Fassi ushers in a new era for the crane industry, bringing innovation, control and sustainability to the heart of operations.



P. 30

Kluytmans Service: Dutch passion for Fassi

From the first contract to a partnership destined to leave its mark: how Harry Kluytmans and his team led Fassi to conquer the Dutch crane market.



P. 34

What's new from Marrel and Cranab

The new range of controls and directional valves for the 14 to 26-tonne capacity Marrel Ampliroll® hook and the new Cranab TL12.

- p.06 The new F2350RL-HXP TECHNO: the most powerful Fassi crane ever
- p.14 XR510: power and versatility for international markets
- p.18 Fassi IoC: complete crane control on a single platform
- p.22 Fassi revolutionises operation control with the Remote Smart Cam - RSC
- p.26 Fassi quality: precision and innovation as a guarantee of excellence
- p.30 Kluytmans Service: the new Fassi dealer for the Netherlands
- p.34 AMPLI'DRIVE, a new range of controls and directional valves for the Ampliroll® hooklift
- p.38 The new Cranab TL12: a versatile and compact crane
- p.42 Engineering a Forez Benne tipper: a concentrate of technologies
- p.44 Fassi, Marrel and Volvo: efficiency and flexibility at the service of Peter Wanker



CONTENTS

LIFTING TOMORROW
n.10/2025

Publication legally registered
at the Court of Bergamo
no. 20/2011 on the 30/08/2011

A Fassi Gru publication
via Roma, 110
24021 Albino (BG) Italy
tel +39.035.776400
fax +39.035.755020
www.fassi.com

Published by
Cobalto Srl
via Torquato Taramelli, 2
24121 Bergamo (BG) Italy

Managing director
Silvio Chiapusso

Editor-in-chief
Mauro Milesi

Printed by
Tecnograph Srl
Via Vittorio Alfieri, 3
24127 Bergamo (BG)

Graphic design and layout
Cobalto Srl



THE NEW F2350RL-HXP TECHNO, THE MOST POWERFUL FASSI CRANE EVER

The F2350RL-HXP TECHNO is the first Fassi crane with 18 hydraulic extensions. The X-Design decagonal cross-sections of the boom and telescopic extensions combined with the FX990 electronic system guarantee optimal distribution of force and dynamic management of movements.



#FassiCranes

The Fassi F2350RL-HXP TECHNO: a revolution in lifting

Fassi is redefining the future of lifting with the F2350RL-HXP TECHNO. **This crane, the most powerful ever made by the company, is also the first in the world to have 18 hydraulic extensions when combined with the L958L jib.**

It is the perfect combination of strength, precision and technology, exceeding all expectations.

Intended to meet the needs of an ever-evolving sector, the F2350RL-HXP TECHNO combines extraordinary compactness and power.

Designed to be fitted on vehicles with a gross vehicle weight of at least 43 tonnes, it combines operational agility with outstanding performance.

The main boom, one metre longer than on the previous F2150RL model, reaches new levels in terms of outreach and lifting capacity, thanks to the advanced L956L, L957L and L958L hydraulic jibs.

The real revolution lies in the technological innovations that make the F2350RL-HXP TECHNO a masterpiece of engineering.

The X-Design decagonal cross-sections of the boom and telescopic extensions combined with the FX990 electronic system guarantee optimal distribution of force and dynamic management of movements. The F2350RL-HXP TECHNO is also the first crane in the range to extend the X-Design technology to the hydraulic extension, fully exploiting the potential derived from an innovative design.

THIS CRANE IS NOT JUST AN EVOLUTION OF THE TECHNO RANGE, BUT A TRUE REVOLUTION DESTINED TO SHAPE THE FUTURE OF LIFTING

TECHNO

F2350RL-HXP



NEW

The FSC TECHNO stability control system allows crane stability to be adapted to different operating conditions. This crane is not just an evolution of the TECHNO range, but a true revolution destined to shape the future of lifting.

CUSTOMISABLE BASE: a tailor-made solution

The F2350RL-HXP TECHNO base is available in three versions (SB, MB, LB) and offers complete customisation to adapt to any vehicle configuration. With six outriggers, two of which are extendable at the rear, it guarantees optimal stability even in the most difficult operating conditions.

X-DESIGN DECAGONAL SECTION

The F2350RL-HXP TECHNO features the revolutionary X-Design decagonal section, an innovation that optimises the distribution of forces between the telescopic extensions, reducing the overall weight of the crane without compromising its structural resistance. This configuration ensures a higher load



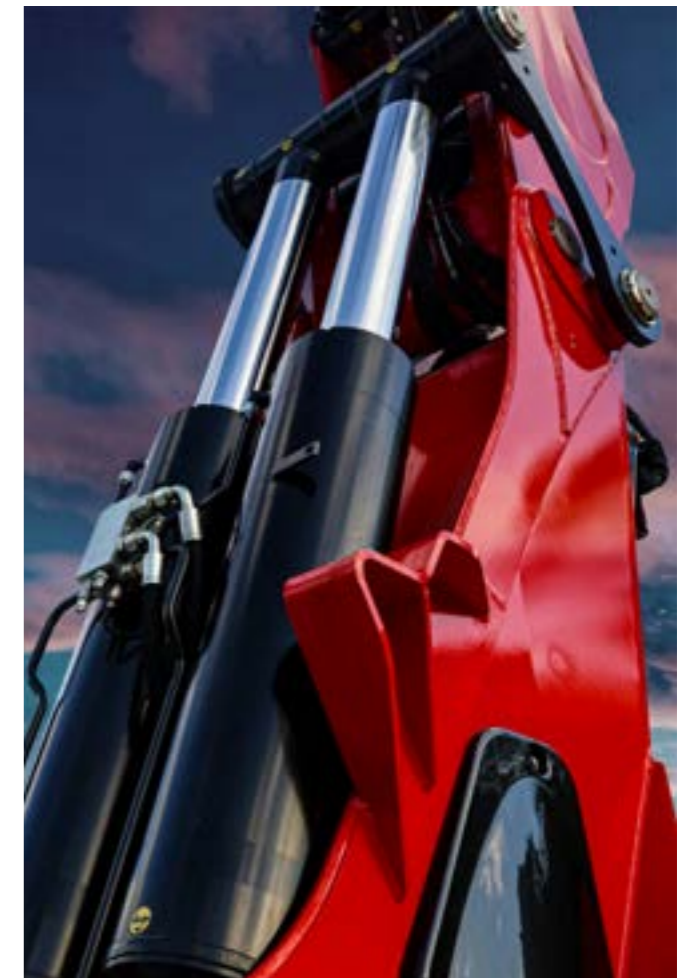
capacity, especially in vertical configurations, and improves the crane's operating efficiency. For the first time in the range, X-Design technology has also been extended to the hydraulic jib, thus making the most of the potential of the main boom and telescopic extensions, improving versatility and effectiveness in the most complex operations.

XF SYSTEM: optimised hydraulic performance

The XF hydraulic system improves the fluidity, precision and speed of the crane's movements, thanks to the adoption of the Danfoss multifunction proportional distributor. The main benefits for the operator include smoother and more progressive boom movements, greater sensitivity in control and a reduction in oil overheating.

Radio-controlled outriggers

The F2350RL-HXP TECHNO is equipped with radio-controlled outriggers, which allow the operator to control the extension and positioning directly



from the radio remote control, without having to intervene manually.

This solution not only facilitates stabilisation operations, but also increases safety, allowing more precise and rapid management of the outriggers in all operating conditions.

FSC TECHNO SYSTEM:

safety and operational flexibility

Thanks to the FSC TECHNO stability system, the operator can choose, based on their needs and working conditions, whether to use a proportional system based on the extension of the outriggers or whether to activate the inclinometer.

This flexibility allows maximum operational safety to be maintained at all times, optimising the crane's performance in every situation.

NEW FIRMWARE:

digital innovation for total control

The new firmware of the Fassi F2350RL-HXP TECHNO revolutionises crane management, offering advanced features to improve precision and efficiency. Thanks to the Internet of Cranes® (IoC) system, the crane remains constantly connected, ensuring safe and effective access to its usage data and providing service statistics after each intervention, as well as ensuring assistance if needed. The JDPX and XP systems guarantee a surplus of power in lifting with hydraulic extension, automatically managing and continuously increasing performance.

HYDRAULIC JIB:

maximum extension and operational flexibility

The L958L jib stands out for its 17.2-metre hydraulic extension with a maximum lifting capacity of 10,000 kg, making it possible to perform extraordinarily long lifting operations without compromising stability or precision. Its pairing with X-Design technology ensures high performance, even in the most demanding work conditions.



NEW PRODUCT

WINCH AND PULLEY SYSTEM:

innovation and power

The F2350RL-HXP TECHNO takes lifting to the next level with the integration of the high-power hydraulic winch, mounted under the secondary boom. This system offers extraordinary operational versatility. In cases of lifting with the L95L jib and steel cables, the permanent pulleys ensure the precise passage along the boom grouping, remaining mounted even when the crane is at rest. This reduces the crane's set-up time and optimises lifting operations.



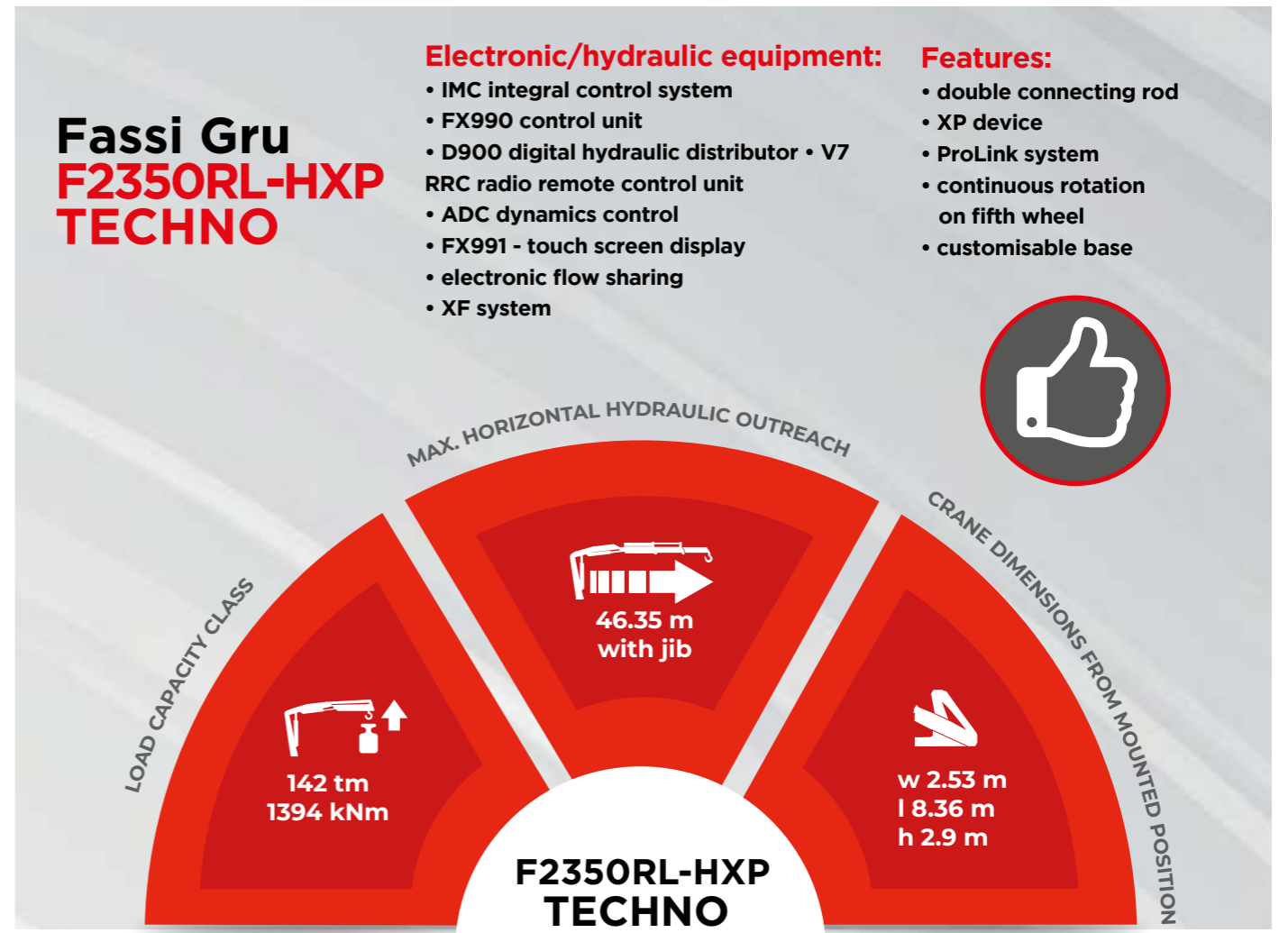
Fassi Gru F2350RL-HXP TECHNO

Electronic/hydraulic equipment:

- IMC integral control system
- FX990 control unit
- D900 digital hydraulic distributor
- V7 RRC radio remote control unit
- ADC dynamics control
- FX991 - touch screen display
- electronic flow sharing
- XF system

Features:

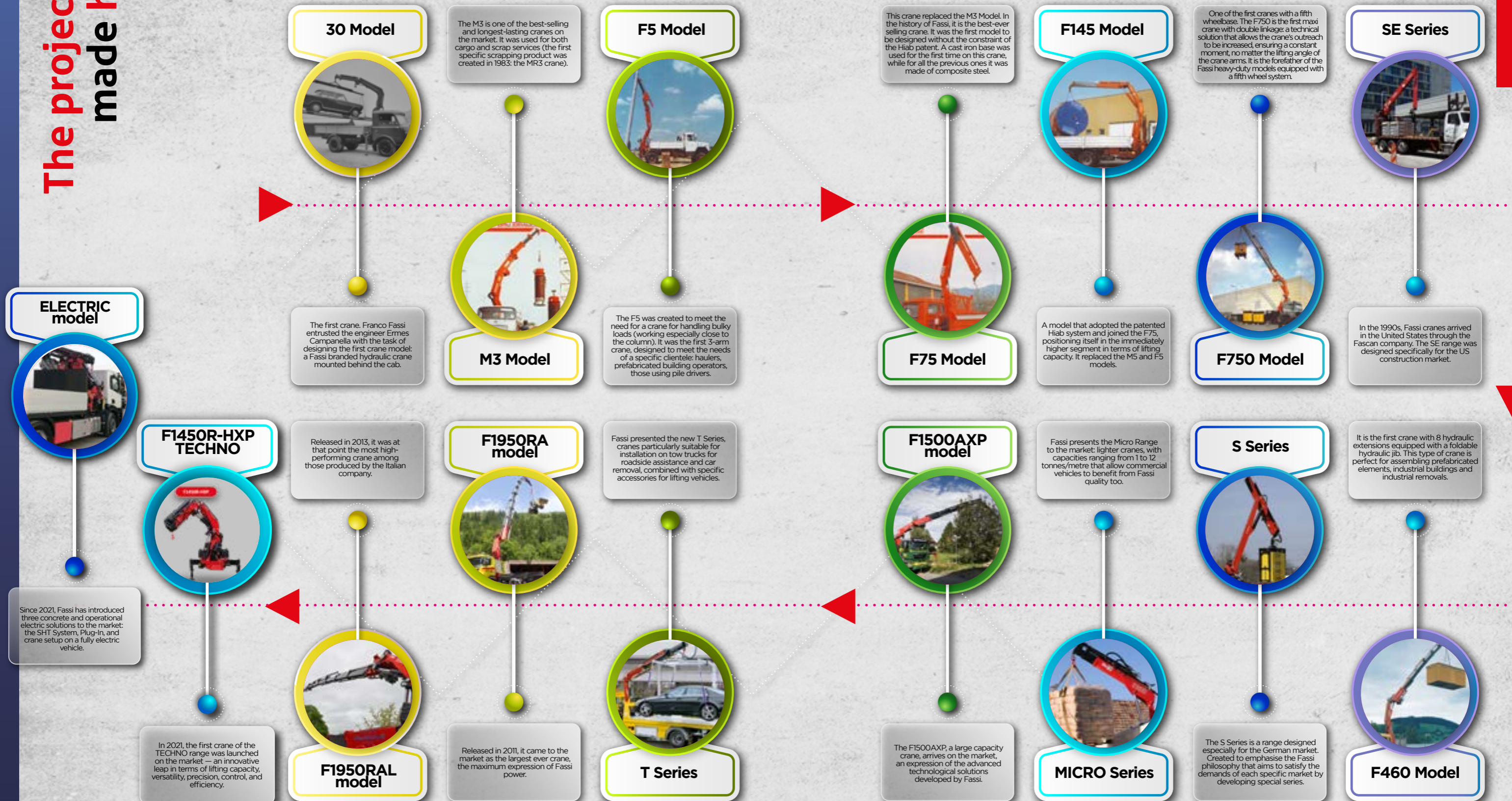
- double connecting rod
- XP device
- ProLink system
- continuous rotation on fifth wheel
- customisable base



The projects that made history

From the first 30 Model crane, hydraulic and installed behind the cab, to the brand new F2350RL-HXP TECHNO, the maximum expression of Fassi power. All the projects that made history not only in the company, but further afield

The extraordinary nature, innovation and uniqueness of Fassi are values imprinted in every crane to come out of the company. There have been hundreds of thousands of cranes produced from that first 30 Model to the F2350RL-HXP TECHNO, the maximum expression of power and innovation. In between, thousands of projects were planned, designed and developed and cranes built that have entered the history of the lifting sector for their innovative features and for their ability to always anticipate the times and needs of the market in all situations.



RETROSPECTIVE

NEW

XR510: POWER AND VERSATILITY FOR INTERNATIONAL MARKETS

The new Fassi XR510 rigid-boom crane stands out for its lifting capacity of 5.1 tonnes and its versatile design, responding to the needs of growing markets such as Asia, South America and Africa.

The XR510 is the new fixed-boom crane with which Fassi aims to strengthen its presence in international markets outside the EC. Designed to meet the needs of strategic areas such as the Middle East, Africa, Asia and the Americas, the XR510 combines solidity, versatility and technological innovation. Designed in Italy at the Fassi Innovation Center and produced at the Fassi Asia Pacific production unit in Malaysia, this XR range model represents a decisive evolution in the company's global vision, offering concrete answers to the needs of an increasingly competitive sector.

 #FassiCranes

THIS UNIQUE STRUCTURE GUARANTEES EXTRAORDINARY LOAD CAPACITY, WHILE MAINTAINING A LOW CRANE WEIGHT FOR EASY TRANSPORT AND OPERATION

With a maximum lifting capacity of 5,100 kg, the XR510 is an ideal solution for those seeking high performance combined with a simple and intuitive user experience.

Manufactured in the Nilai plant in Malaysia, the XR510 is an example of how innovation and reliability can coexist in a single product. The heart of the XR510 is its telescopic arm, made with a hexagonal cross-section in ultra-high-strength steel. **This unique structure guarantees extraordinary load capacity, while maintaining a low crane weight for easy transport and operation. The arm is designed to ensure smooth movements thanks to a valve that reduces friction, improving precision and reliability.**

High-performance winch

The winch is a real asset of the XR510. Installed inside the crane column, it is operated by a powerful and reliable hydraulic gearmotor. The winch enables lifting via a hook and a steel cable, equipped with a hydro-piloted brake and a limit switch system with rope guide that guarantees maximum reliability and safety.

Continuous hydraulic rotation

The XR510 is equipped with a compact fifth wheel, designed to ensure smooth movements even on uneven terrain with inclinations of up to 5 degrees.

This system improves performance during complex manoeuvres, ensuring a generous rotation torque and a high degree of precision in movements with a continuous 360-degree angle.

FX 200 electronic control system

Safety is a top priority in the design of the XR510. The electronic load condition control unit provides the operator with useful information to evaluate the working conditions the crane will be under and is equipped with a blocking command in the event of excessive overload, for the maximum protection of the operator and the structure of the crane itself.

Optimal stabilisation

The hydraulic outriggers of the XR510 offer unique versatility and the possibility of their rotation is available to facilitate set-up on vehicles.

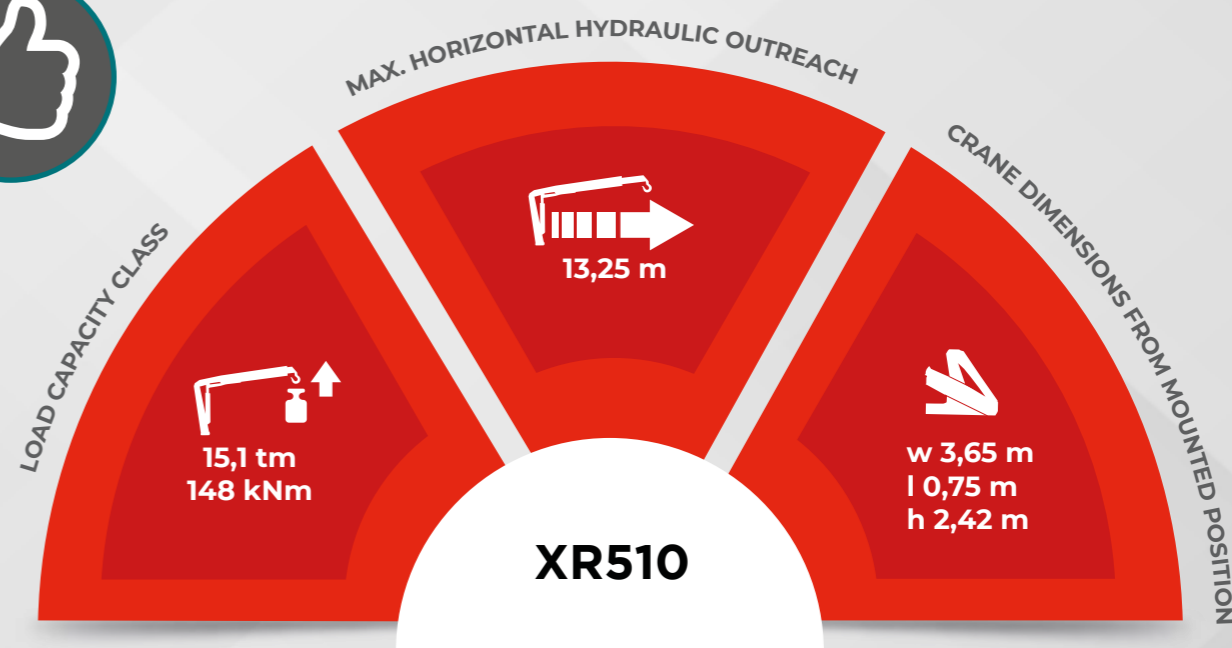
Control levers

The use of advanced control valves specifically for the control levers ensures optimal response during activation and extraordinarily precise control in every situation.

Durable and capacious tank

The steel tank with a capacity of 130 litres, equipped with an indicator and integrated oil filter to ensure maximum cleanliness of the hydraulic circuit.

Technical features XR510



The crane is available in three configurations, each designed to meet specific operational needs:

- **XR513:** equipped with two hydraulic extensions, for operations that require compactness and precision.
- **XR514:** with three extensions (two hydraulic and one with rope), for greater operational versatility.
- **XR515:** four extensions (two hydraulic and two with rope), for those who need maximum extension without sacrificing load capacity.



Michele Dossi
CEO Fassi Asia Pacific



“With the XR510 we wanted to respond specifically to the needs of the Asian, South American and African markets, where powerful but simple and safe lifting solutions are sought. This crane is the result of careful design and production that

looks at quality and reliability as essential elements. The XR510 represents Fassi’s ability to be versatile and to adapt quickly to international demands, offering a product that takes our brand of excellence and innovation into new territories.”

FASSI IoC: COMPLETE CRANE CONTROL ON A SINGLE PLATFORM

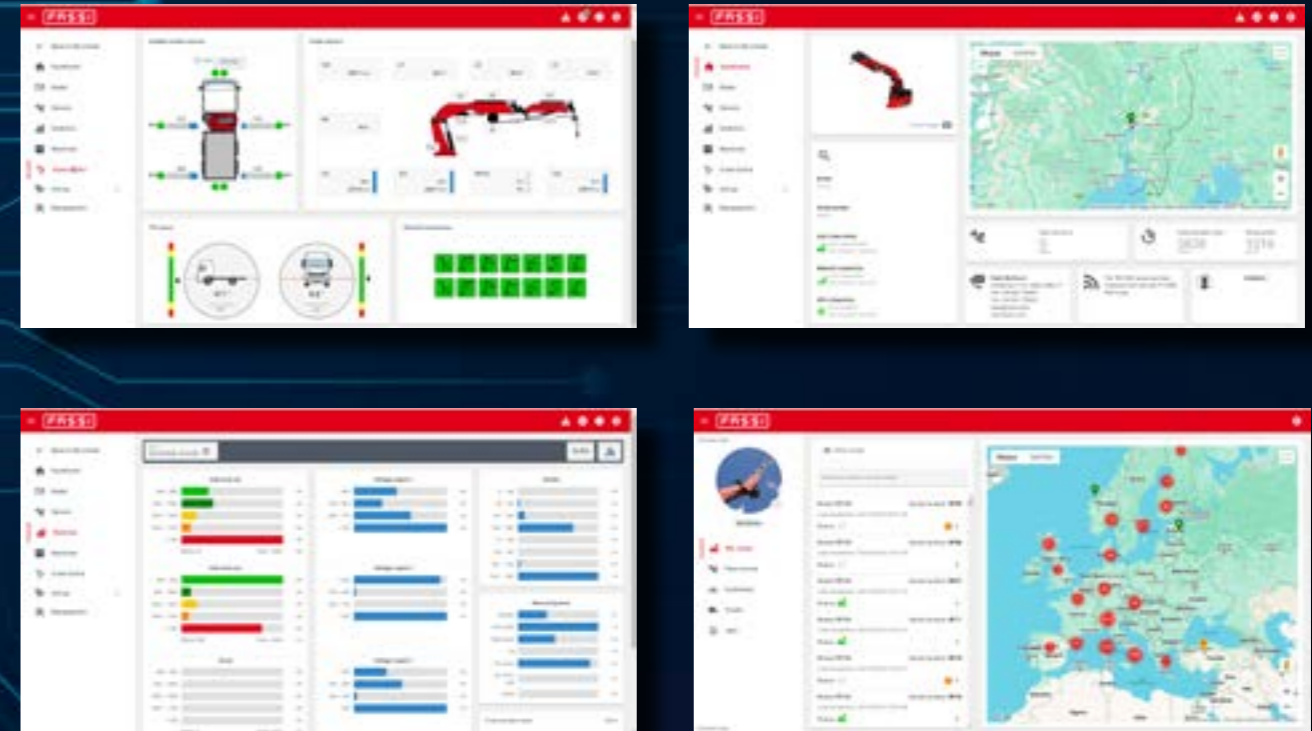


With the Internet of Cranes (IoC), Fassi inaugurates a new era for the crane industry, bringing innovation, control and sustainability to the centre of operations. Thanks to an advanced platform, cranes can become part of an interconnected system that allows fleets to be monitored, managed and optimised in real time.



Thinking of a crane fleet as an interconnected ecosystem June seem futuristic, but **with the Fassi Internet of Cranes (IoC) the future is already a reality. Every operation, every piece of data, every movement becomes part of a unified system of management, designed to simplify and optimise daily work. Thanks to a web portal structured on various access levels, the IoC allows operators, dealers and technicians to have a complete and customisable view of each crane.** Each technical aspect, from maintenance to telemetry, has been designed to optimise efficiency, reduce downtime and ensure intelligent machine management, integrating all the functions needed for modern and advanced crane management into a single system. The roots of this innovation date back to the SmartApp project, launched in 2009, which already enabled customising crane parameters via a mobile application. As technologies progressed, Fassi took this concept to the next level, moving from individual control of each crane to integrated fleet management, ushering in the era of IoC. But Fassi soon realised that digitalisation could go beyond the single machine. With the arrival of IoT technologies, the idea of the Internet of Cranes took shape: no longer would there be just a connection between crane and operator, but a network of interconnected cranes capable of communicating and sharing data on a centralised platform. In 2011-2012, Fassi officially launched the IoC, revolutionising fleet management and opening the doors to advanced machine monitoring, remote diagnostics and unprecedented optimisation.

FASSI HAS IMPLEMENTED ADVANCED PROTECTION PROTOCOLS TO ENSURE DATA CONFIDENTIALITY AND RELIABILITY. ONLY AUTHORISED PERSONNEL HAVE ACCESS TO THE SERVERS



The IoC brings tangible benefits to all stakeholders in the sector, starting with operators who, through a single portal, can monitor all the information relating to their cranes without having to resort to the direct intervention of the dealer. Thanks to the integrated GPS, operators can know the position of the machines in real time, monitor the wear of the components and plan preventive maintenance, eliminating unscheduled downtime and saving precious resources.

Access to a unified platform allows you to view the operational status of the fleet in just a few clicks, detect any anomalies and intervene promptly if necessary. Operational efficiency increases and, at the same time, costs related to maintenance and travel are reduced.

Dealers also benefit significantly from this system. Thanks to the Crane Doctor feature, if the customer wishes, they can remotely monitor the cranes sold and receive alerts in the event

of technical problems. The preliminary remote diagnosis allows for intervention only when strictly necessary, reducing machine downtime and improving the quality of service offered to the customer.

In the context of continuous interconnectivity, data security is an essential priority. Fassi has implemented advanced protection protocols to guarantee the confidentiality and reliability of the data. Only authorised personnel have access to the servers, while sensitive data is encrypted to avoid any risk of unauthorised access.

The IoC is not limited to operational monitoring but offers complete management of work orders. The data collected includes detailed information on the activities carried out by the crane, from the movement of the truck to usage statistics.

This is particularly useful for rental companies, which thanks to this information can monitor the

IoC ADVANTAGES FOR:



OPERATORS:

- Real-time monitoring
- Preventive maintenance
- Reduction of machine downtime

DEALERS:

- Remote diagnostics
- Fast interventions
- Reduction of unexpected machine downtime

FASSI:

- Data-driven design
- Targeted technical assistance

actual use of the cranes and verify that they are used correctly.

But Fassi is also looking beyond the current version of the IoC. The company is already thinking about new future developments, with the aim of further expanding the system's functionality.

The ability to record a detailed history of the activities carried out on each crane, including overhauls and maintenance, presents a concrete opportunity to improve traceability and increase operational safety.

And it doesn't end there: thanks to the collected data, Fassi will be able to design new cranes based on a data-driven approach, customised to meet the specific needs of operators, based on advanced statistical analysis of usage data.

FASSI REVOLUTIONISES OPERATION CONTROL WITH THE REMOTE SMART CAM - RSC



Where every manoeuvre calls for the utmost precision, the possibility to view real-time images directly via the V7S radio controller display ensures immediate and precise monitoring of the area of action. With the new Remote Smart Cam, the operator can distance themselves from critical areas while maintaining full control of operations.



Fassi has underscored its role as leader and innovator for the sector, continuing to push the boundaries for technology applied to lifting. The company has introduced the first Wi-Fi video-camera designed for cranes, an innovation that revolutionises operation control and raises safety standards. The Remote Smart Cam - RSC not only offers a wider range of operational possibilities, but also provides operators with an unprecedented level of supervision.

For those working in complex situations, where every manoeuvre calls for the utmost precision, the possibility to view real-time images directly via the V7S radio controller display ensures immediate and precise monitoring of the area of action, allowing more efficient and informed operations.

The RSC provides operators with an improved view of the load being lifted, increased control during load handling, and the ability to work with complete piece of mind even in poor lighting conditions. The Wi-Fi connection allows the operator to fit the video camera in the most suitable position according to the working context, flexibly adapting to varied operating situations.

With the new Remote Smart Cam, the operator can distance themselves from critical areas while maintaining full control of operations. The video transmitted in real-time to the radio controller not only represents a technical function, but also an innovative solution that provides direct and immediate human-machine connection, reducing uncertainties and expanding the range of operational options.

The cornerstone of the system is the tilting magnetic mount, designed to easily adapt to the operator's needs. For increased stability, a locking mechanism allows the viewing position to be locked, ensuring image stability whatever the operating conditions. The system has been designed to offer extensive autonomy and easy management.

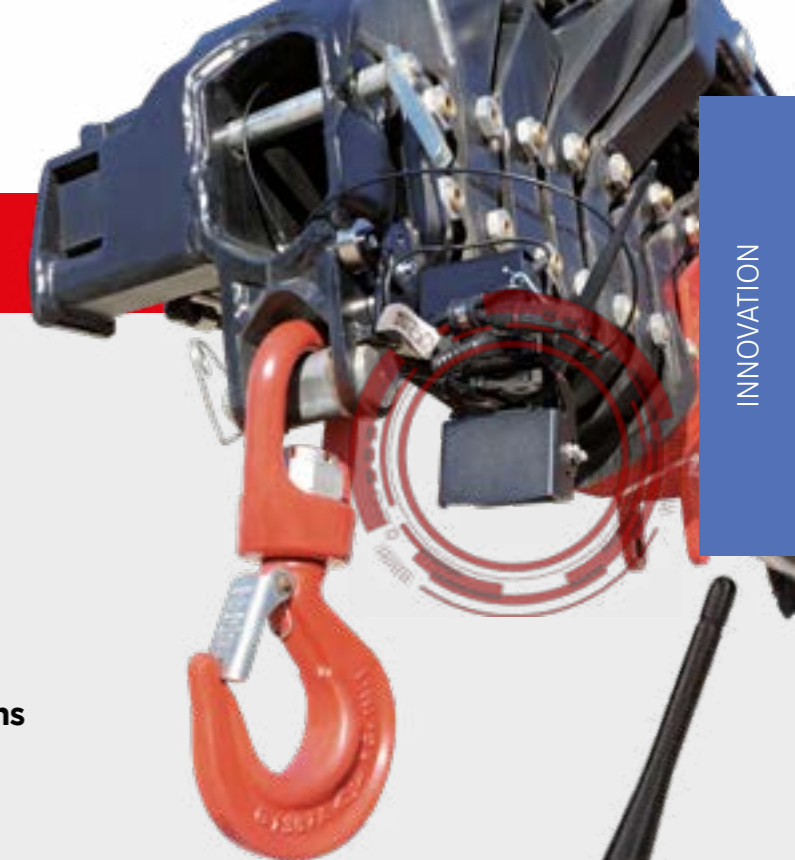
The Remote Smart Cam - RSC not only represents a practical technical solution, but also a response to market demands for ever-higher levels of safety and professionalism. Every detail has been studied to respond to the practical needs of everyday crane operators, offering tools that not only improve safety, but that also make every operation easier and more efficient.

BENEFITS

- ▶ **Improved viewing**
Offers a clear and detailed view of the load being lifted
- ▶ **Increased control**
Allows for precise control when handling loads.
- ▶ **Operability in poor lighting conditions**
Offers a clear and detailed view of the load being lifted.
- ▶ **Wireless system**
Eliminates the need for cabling, guaranteeing optimal practical flexibility.
- ▶ **Operator safety**
Allows operators to move away from critical areas while maintaining full control.

TECHNICAL SPECIFICATIONS

- **Sensor:** 1/2.7" CMOS
- **Resolution:** 1280x720
- **Viewing angle:** 100°
- **Ingress protection:** IP69K
- **Image stabilisation:** Yes
- **Night vision:** 18 IR LEDs
- **Operating temperature:** -20 / +70° C
- **Dimensions:** 72x42x52 mm
- **Open-air range:** 80 m
- **Battery life (IE800):** 15 h



FASSI QUALITY: PRECISION AND INNOVATION AS A GUARANTEE OF EXCELLENCE

Alessandro Azzola, Quality, Safety and Environmental Manager at Fassi, explains how every detail of the production process contributes to building a product that meets Fassi standards, from the arrival of raw materials to final testing.

Quality, for Fassi, is not just a word, but a silent promise that is renewed every day between those producing quality and those who choose it. It is the precise movement of a welder, the hand that controls a sheet of metal as if it were a precious page, it is the thought of those who know that every detail counts. **Alessandro Azzola reveals to us what it means to produce quality at these levels: it is the courage to be rigorous, the ambition to leave nothing to chance.**

What does “quality” mean for Fassi and how is it reflected in the company’s production processes?

For Fassi, quality means product conformity, continuous monitoring and verification at every step of production. It is a concept that

goes well beyond the ISO 9001 and NATO AQAP AQG-4 certifications, extending to every aspect of the company system. Every stage of production, from material selection to final testing, is rigorously controlled and certified to ensure that each product complies with the technical design parameters. It is our culture of quality, built up over the years, that allows us to guarantee reliability and safety over time, maintaining the high Fassi standards.

Can you tell us about the role of the Fassi Quality Laboratory and how it fits into long-term quality management?

Our Quality Laboratory is the heart of quality control and a true data archive that allows us to manage quality



Alessandro Azzola
Quality, Safety e Environmental
Manager

in the long term. Equipped with advanced machinery, we perform invasive and non-invasive tests on materials, castings and welding, systematically recording every result. In this way, the laboratory helps to ensure that our products always comply with high Fassi standards and allows us to make constant improvements to our processes. In the event of non-compliance, we intervene quickly with corrective actions to maintain the expected level of quality.

What types of checks are carried out on incoming materials and how important is it to maintain close working relationships with suppliers?

The quality of raw materials is fundamental for Fassi, so we apply rigorous checks on incoming materials, such as bending, proportion, micrograph and welding tests to verify their quality and resistance to external agents.

We carefully qualify each supplier and their materials before purchasing, and we continue to monitor the quality of the materials when they arrive at our factories. Working with suppliers is essential, as it guarantees the constant quality of raw materials and allows us to maintain strict control over the production process.

What innovations have been introduced in the welding, painting and oil control processes to further improve the quality and durability of Fassi cranes?

Quality means continuous verification and monitoring of processes that are special to us, such as welding, painting and oil control. As regards welding, we approve all incoming materials and qualify the sheets, which are special and have a high elastic limit. Before being used, these sheets and filler materials are subjected to a series of tests, including bending, proportion, micrograph and welding tests, to ensure their reliability. Painting, also considered a special process, involves the approval of the paint products and rigorous resistance tests,



including UV tests, for colour and gloss retention, as well as corrosion resistance. Finally, oil control is crucial, as the crane's hydraulic system depends on oil. We carry out thorough tests to detect any contamination both in the purchased oil and in the crane components during final testing, to guarantee maximum efficiency of the hydraulic circuit.

How does Fassi use technology and innovation to ensure consistently high quality standards?

The use of technology is an integral part of our quality system. We use advanced IT tools to monitor and record data in real time, collecting information throughout the production cycle and ensuring complete control at every stage. This system allows us to respond promptly to any anomaly and maintain high standards, ensuring that each step of production complies with technical requirements and is traceable.

What is the final verification process for Fassi cranes and how is the testing carried out?

At the end of the assembly phase, each crane is

subjected to a complete inspection and a detailed test run, which includes technical-functional checks on hydraulic and electronic components. We use a detailed checklist to verify operation and calibration, ensuring that everything is perfectly calibrated before shipping to the customer.

Thanks to the precision and rigor applied in all previous phases, the test run becomes a formality that guarantees our customers a compliant and reliable product.

The certification of internal and external operators is a key point. How important is this programme for product quality?

Certifying welding operators is essential to maintaining our high quality standards. Each welder is qualified according to company standards and obtains a license that certifies their skills, ensuring that each job is carried out with maximum precision and safety.

The quality of each operator's work is an integral part of the overall quality of our cranes and helps maintain our reputation for reliability.

CLIMATIC CHAMBER TESTING

The electronic components of Fassi cranes are tested to withstand extreme temperatures, from -40°C to +70°C, ensuring reliable performance. Testing includes resistance to dust, water (up to IP65), vibration, UV rays and ozone, ensuring functionality even in adverse environments.

OIL CONTAMINATION

Oil contamination, the cause of approximately 80% of failures in hydraulic systems, is prevented with rigorous filterability tests and microscopes that detect particles such as iron and aluminum. The contamination class reaches level 21/16/12 ISO 4406, a benchmark of excellence.

WELDING CHECKS

To ensure structural integrity, Fassi performs bending, tensile and macrograph tests on the welds, analysing the fused, heat-affected and unaltered base areas. This approach ensures stability and resistance at the joints.

PAINTING CHECKS

The painting of the cranes is checked to ensure durability and uniformity of colour, with spectrophotometers that measure its precision ($\Delta E \leq 1.5$). Salt spray and UV tests, for a minimum duration of 1000 hours, guarantee shine and resistance.

MICROGRAPHIC ANALYSIS OF MATERIALS

Micrographic analysis allows the mechanical properties of metal alloys to be optimised, classifying structures such as ferrite, pearlite and martensite. This approach ensures that the alloys are suitable for the high resistance standards required by Fassi.

KLUYTMANS SERVICE: DUTCH PASSION FOR FASSI



#KluytmansService



From the first contract to a partnership destined to leave its mark: how Harry Kluytmans and his team led Fassi to conquer the Dutch crane market.

Kluytmans Service
Julesverneweg 100, 5015 BM Tilburg

www.kluytmansservice.nl

There are dates that mark a beginning, as well as a commitment. On 25 January 2024, Harry Kluytmans signed a contract that gave a **new direction to the future of the company Kluytmans Service**. A few months later, on 30 June, an event in Tilburg officially formalised this alliance: a day dedicated to Dutch dealers, where **Fassi, Marrel and Cranab introduced themselves not only as brands, but as promises of innovation. From that moment, a collaboration destined to redefine the Dutch crane market took shape.**

“We chose Fassi because it is among the top three manufacturers in the world,” says Harry Kluytmans with pride. It was a choice made not only on prestige, but on vision. “The new TECHNO cranes represent an extraordinary step forward, and this has convinced us of their potential.” Technological innovation and reliability are the cornerstones of this partnership, but what makes this collaboration unique is shared values: quality, flexibility, passion for the product and a commercial approach that puts the customer at the centre of it all. “We are on the same wavelength with Fassi”, adds Harry. The first success was not long in coming. “We told a loyal customer about the great news of becoming Fassi importers,



and he immediately shook our hand to buy two Fassi cranes.” An emotional moment, as Harry describes it, which represents more than a sale: it is the confirmation of mutual trust and the promise of a long journey together. The Dutch market, always attentive to quality and price, has found an ideal ally in Fassi. Kluymans Service, already known for cranes mounted on heavy trucks, is now pushing to expand into the segment of smaller cranes. Sectors such as construction, road and hydraulic engineering, energy and defence are seeing increased use of Fassi solutions. And what are the most popular models? “Heavy cranes, between 90 and 150

tonne-metres, are particularly strong on the market today,” explains Harry. “The TECHNO range, with the X-Design profile of the extension and secondary booms and the advanced FX990 electronics, represents a great opportunity to enter the market decisively.” But what is the secret of Kluymans Service? “We offer a unique combination: Fassi quality and service, combined with our dealer network and an approach that makes the process of purchasing a truck-mounted crane as simple as possible for the customer.” With national coverage guaranteed by 10 dealers and a team of 20 people at the headquarters in Tilburg,

Kluymans Service positions itself as a solid and reliable point of reference. Looking to the future, Harry Kluymans foresees an ever-closer collaboration with Fassi, Marrel and Cranab. “These brands are essential for us going forward. And then there are my two sons, who work in the company and who will take over from me one day. This is the future,” he says with a smile that betrays the pride of a father and an entrepreneur. **If he had to describe Fassi in one word, Harry has no doubts about what it would be: “Future”. Because when passion, innovation and vision meet, the future is not just a hope, but a certainty.**

KLUYTMANS SERVICE

Kluymans Service BV was founded almost 50 years ago and today the third generation of the Kluymans family is already actively involved in its work. The company's strength lies in its ability to collaborate and create lasting relationships, whether with customers or employees. The informal approach, typical of a family business, is combined with professional management: direct

lines of communication, stable personal contacts and a flexibility that customers particularly appreciate. With a team of dedicated experts, Kluymans Service guarantees impeccable service, high quality, operational safety, low maintenance costs and competitive prices. Today, the company is a key player in the truck crane market, while maintaining its family values.

Strengths:

- Almost **50 years** of experience in the industry.
- **Family-run** in its third generation.
- **A network of 10** dealers with national coverage in the Netherlands.
- A team of **20 experts** at the headquarters in Tilburg.
- **High quality**, operational safety and competitive prices.
- **Direct and personal relationships** with customers and dealers.



AMPLI'DRIVE INNOVATION

Discover the new way to use the 14 to 26-tonne capacity Ampliroll® hook.



Choosing the Ampli'Drive HIGH configurations means equipping yourself with a complete and innovative solution, designed to optimise the efficiency of the Ampliroll® system. With a wide range of hydraulic and control systems, compatible with both telescopic and articulated models of the S, SL and LP ranges with load capacities from 14 to 26 tonnes, the Ampli'Drive HIGH configurations offer ideal versatility for adapting to different operational needs.

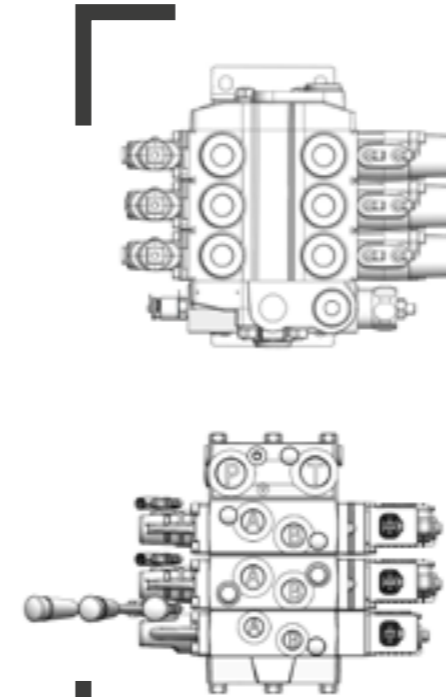
Operator comfort is a priority: with **five versions of customised and ergonomic controls, using the hook becomes quick and satisfactory, reducing effort and increasing precision in manoeuvres.** Each control is designed to ensure a smooth,

intuitive user experience that adapts perfectly to the rhythm of your work.

Finally, power is the hallmark of the Ampli'Drive HIGH packs. Thanks to the robust Marrel free swinging frame, known for its reliability, you can achieve unrivalled lifting capacity.

This system, which identifies Marrel installations, allows you to tackle the heaviest loads efficiently and safely, offering performance that makes the difference.

With Ampli'Drive HIGH, every operator can count on a pack designed to meet their exact needs. Versatility, ergonomics and power: all in a single, tailor-made solution.



DIRECTIONAL VALVE

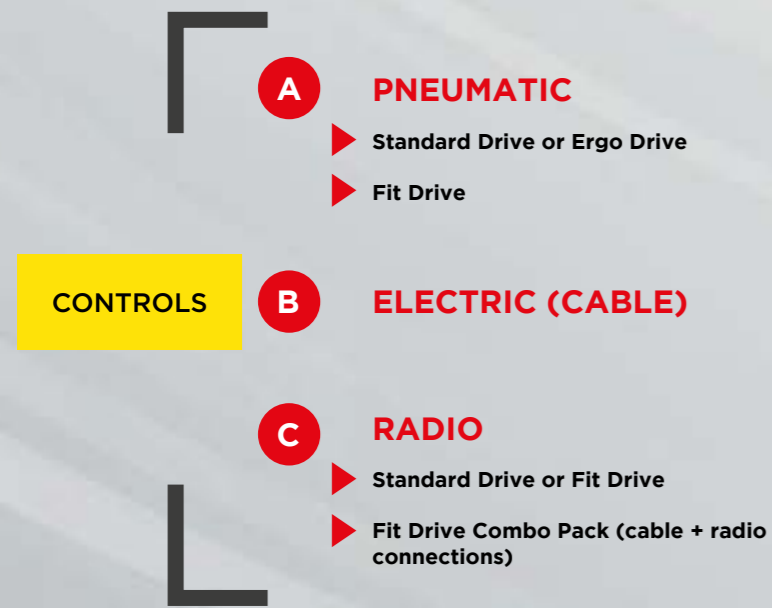
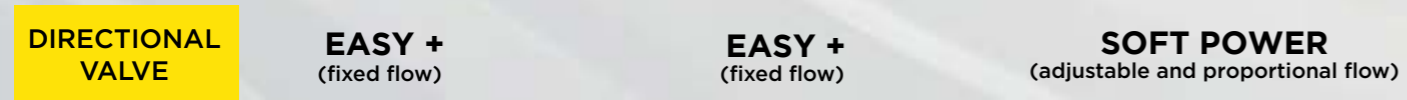
EASY+

This solution offers a distributor with pneumatic or electro-pneumatic controls and a flow rate of 90 L/min for all functions, ensuring reliability and ease of use. It is ideal for those looking for an efficient and practical system.

NEW SOFT POWER

The innovative option with electronically controlled distributor that offers a flow rate of up to 120 L/min and proportional movement, ensuring more precise and fluid control. This advanced system is designed for those who want to maximise performance with latest-generation technology.

Ampliroll® HIGH PACKS



#Innovation
FIT Drive - Electric

#Robustness
ERGO Drive pneumatic

#Performance
FIT Drive - Radio



marrel.com



THE NEW CRANAB TL12: A VERSATILE AND COMPACT CRANE FOR THE FORESTRY SECTOR AND FOR HEAVY ROAD TRANSPORT

Cranab®
FASSI GROUP



The TL12 is available in two versions with a single or double telescopic boom, designed to operate in small spaces without compromising power and reliability.

Cranab continues to innovate in the field of lifting solutions, introducing the new TL12, a crane designed to meet the needs of those working in the forestry sector. It is not just a simple crane, but a versatile and powerful solution, designed to offer efficiency and reliability both on trucks and on wood chip trailers. Thanks to a compact design and targeted technological innovations, the TL12 stands out for its high performance and adaptability in different operating situations.

Two versions for every loading requirement
The TL12 is available in two versions: the TL12.2, equipped with a double telescopic arm and capable of extending up to 9.7 metres, and the TL12.1, with a single telescopic arm and an extension of 8.1 metres. Both versions have been designed to adapt to the most demanding loading requirements, maintaining compact dimensions and facilitating operation even in small spaces. The minimum length of the TL12 with the arm horizontal is 6.48 metres, with a maximum height of just 2700 mm for the TL12.2 version and 2726 mm for the TL12.1.

The TL12 introduces a new connection system between the arms, which with its innovative design has made it possible to reduce the overall height of the crane and increase the lifting torque. This innovation, in addition to reducing friction, makes the crane more efficient and robust, ready to face the challenges of intensive loading, even in difficult conditions.

The TL12 has been designed to make maintenance easier and faster. The main hydraulic lines are integrated inside the boom, and those of the second cylinder are protected by an external cover.

The protection system not only reduces the risk of damage, but also allows for quick and safe interventions, with easy access for example during pipe maintenance.

The crane tip has also been optimised: its new angled and open-section design with lateral reinforcements reduces the risk of damage to the hydraulic pipes, especially when used in complicated positions. All the innovations guarantee greater freedom and work efficiency, making the TL12 ideal for intensive operations, even in small spaces.



**CRANAB
TL12**

TL12.1

- Maximum extension: 8.1 metres
- Lifting Capacity: 115 kNm
- Maximum Hydraulic extension: 1.61 metres

TL12.2

- Maximum extension: 9.7 metres
- Lifting Capacity: 109 kNm
- Maximum Hydraulic extension: 3.22 metres

**CRANAB SIGNS
LANDMARK DEAL
WITH SETRA GROUP:**

**12 FC13 CRANES FOR
MALÅ SAWMILL**



Cranab has recently signed a major deal with the Setra Group to supply 12 FC13 cranes to the Malå sawmill in Sweden. This project is part of a plan to modernise the sawmill, supported by an investment of half a billion Swedish krona (SEK), which aims to improve the operational efficiency and production capacity of the plant.

This order is the largest ever placed with Cranab for a single site. The FC13 cranes, designed to ensure reliability and precision in lifting operations, have already been delivered and installation at the sawmill is scheduled for 2025.

The agreement with the Setra Group confirms Cranab's posi-

tion as a leading supplier of advanced solutions for the forestry sector, further strengthening its presence in high-end industrial facilities.



ENGINEERING A TIPPER: A CONCENTRATE OF TECHNOLOGIES

At first perceived as a simple container, the tipper is in fact an extremely adaptable and highly technical product.

At Forez-Bennes, each tipper is more than a simple container: it is designed to meet the specific requirements and expectations of each customer.

Whether transporting inert materials, blocks of rock, asphalt, pallets or all kinds of waste, each user has unique needs and constraints related to their activity.

Our tippers are custom designed to combine robustness, durability and functionality, offering solutions perfectly adapted to operational realities.

The design and integration phases of a tipper on a vehicle are complex processes. The Forez-Bennes design office works closely with each customer to ensure perfect compatibility with the vehicle's other equipment, such as a crane. The design phase is essential for ensuring that each tipper adapts to the specific characteristics of the vehicle (wheelbase, load distribution, etc.) and complies with current regulations.

Thanks to this technical expertise, we are able to precisely adapt the tipper to the chassis, ensuring compatibility with other equipment and harmony in the vehicle body.

Since 2020, Forez-Bennes has set up an R&D department dedicated to new technologies, imagining and developing innovative solutions that improve not only operator safety, but also the ease of use of equipment.

Forez-Bennes offers increasingly efficient and ergonomic trucks, providing real added value to its customers.



FOREZ-BENNES presents a 100% electric two-way tipping crane.

This project, based on numerous technological innovations developed by Forez-Bennes, optimises energy usage and minimises noise emissions. For the user, the product is fully functional, safe and practical. A real success!

#ForezBennes



ON-BOARD ELECTRONICS:

Forez-Bennes now offers patented solutions for real-time monitoring of the status of **equipment on heavy vehicles, with two flagship systems: Gééc and Konnect.**

KONNECT® is a wireless solution using autonomous sensors and LoRa radio technology (more reliable than Bluetooth for this application). It is quick and easy to install and provides continuous monitoring of the required equipment, such as the position of the tail lifts. The in-cab screen provides visual and audible warnings to alert the user to any non-compliant situations. Thanks to the CAN bus, it is also possible to inter-



act directly with the truck's controls, for example by limiting its speed in the event of an alert.

GÉEC® is a more ergonomic system, allowing drivers to monitor the position of the mobile equipment installed on the vehicle (doors, sideguards, outriggers or cranes) in 3D and in real time. Here too, visual and audible warnings are automatically triggered when risks are identified. The driver is also able to recognise any anomalies. The Gééc system integrates an event log to ensure full traceability of operations.



FASSI, MARREL AND VOLVO: EFFICIENCY AND FLEXIBILITY AT THE SERVICE OF PETER WANKER

A tailor-made project that combines the technology of the F545RA.2.27 xe-dynamic, the Marrel hooklift system and the solidity of a Volvo vehicle. Thanks to the experience of Kogler and the setup by Leitner Fahrzeugbau, the Wanker company stands out for its versatility and efficiency in every operational area.

In a company like Peter Wanker's, flexibility is not a luxury, but a necessity. Located in Ampass, in the heart of Tyrol, this family business, founded in 1995, deals with a wide range of activities: crane work, earthmoving, glass pane mounting, special transport and scrap trading. Each job brings with it different challenges, and to meet them you need versatile and reliable equipment. This need led to the choice of a Volvo FMX 500 equipped with a Fassi F545RA.2.27 xe-dynamic crane and a Marrel AL20PAS hooklift system. This custom designed combination is the result of collaboration between Kogler Krantechnik, Fassi dealer for the Austrian market, and Leitner

Fahrzeugbau, which took care of the vehicle setup.

The goal was clear: to create a vehicle capable of meeting all the operational needs of the Wanker company, with particular attention to versatility and efficiency. The Fassi F545RA.2.27 xe-dynamic crane was chosen for its advanced features, including the extendable JIB, the V20 winch and the XP control, which guarantee precision and speed even in complex situations.

Patrick Leitner, setup manager, says: "When Kogler proposed this project to us, we immediately understood its scope. Thanks to direct dialogue with the customer and perfect synergy with Kogler, we were able to make the most of the available space on the vehicle, positioning the





accessories so that they are always functional.”
The Marrel AL20PAS hooklift system added a further level of flexibility, allowing the use of containers of different sizes based on operational needs. The crane, for its part, stands out for its low weight, which allows it to maintain a high payload capacity without compromising robustness and stability.

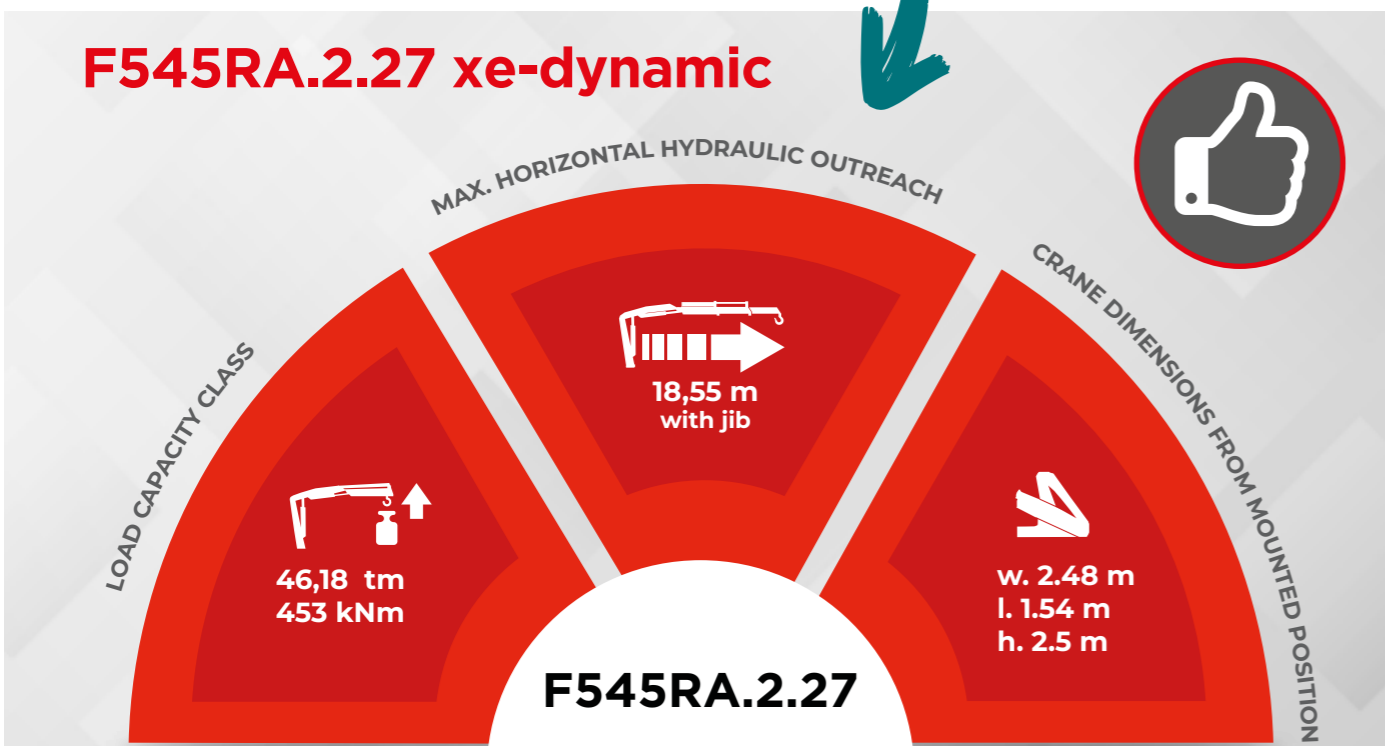
Thanks to the V20 winch, the Fassi F545RA is perfect for fast and efficient operations, such as carpentry work and handling on construction sites. In situations that require precision, the combination of the extendable JIB and the raised hook attachment allows it to reach considerable distances, ideal for positioning panes of glass using manipulators. The high lifting capacity, combined with XP control, ensures the management of heavy loads such as excavators or bulky materials.

The crane easily adapts to different operating situations, thanks to the auxiliary lines up to the tip of the boom and the Quickblock system, which allows you to quickly change different hydraulic accessories depending on the lifts.

Completing everything, the Marrel AL20PAS hooklift system, with its telescopic and articulated mechanism, allows you to handle containers up to 6100 mm long, offering additional versatility. Peter Wanker is no stranger to the world of Fassi: in the past he had already used an F305 model, appreciating its reliability and performance, as well as the technical support of Kogler Krantechnik. The choice of the F545RA.2.27 xe-dynamic was a natural evolution, as Wanker himself explains: “From the beginning, the goal was to design a work tool that was as versatile and universal as possible. We pursued this goal in the choice of components, such as the crane, vehicle and set-up, and together with our partners we achieved it successfully. We are more than satisfied with the result.”

This project demonstrates how the synergy between advanced technology, experience and collaboration can create customised solutions, capable of tackling any challenge with efficiency and reliability.

F545RA.2.27 xe-dynamic



Kogler Krantechnik

Kogler Krantechnik is a flexible and dynamic company in the lifting sector and in technology for handling cargo in transit by road. Thanks to the decades of experience of its staff and continuous training, Kogler Krantechnik is always at the forefront of technology in the creation of crane setups and is able to meet customer needs in a very short time. Kogler Krantechnik GmbH, based in Maria Saal, is the first reference point in Austria for loader, timber and recycling cranes, hooklift systems and mini cranes. In collaboration with the Fassi Group, we distribute cranes of all sizes.



FASSI GROUP



10 | June 2025

 fassigroup.com

LIFTING TOMORROW

International Information Magazine of the FASSI GROUP

**SEE YOU
AT**



**25-27
Sept.**

FASSI