

F1050R.2-HXP TECHNO

Temporary



lbs/ft

F1050R.2-HXP TECHNO

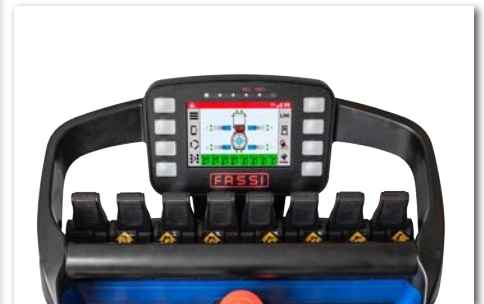
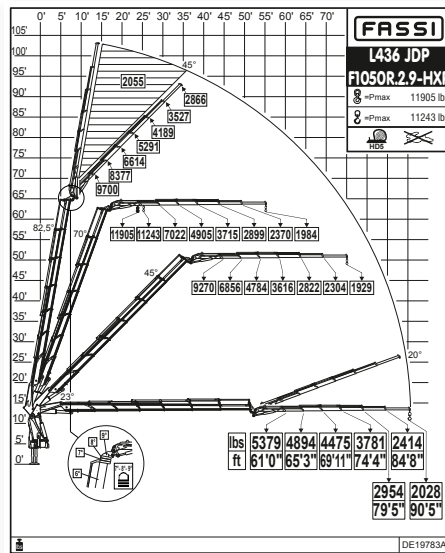
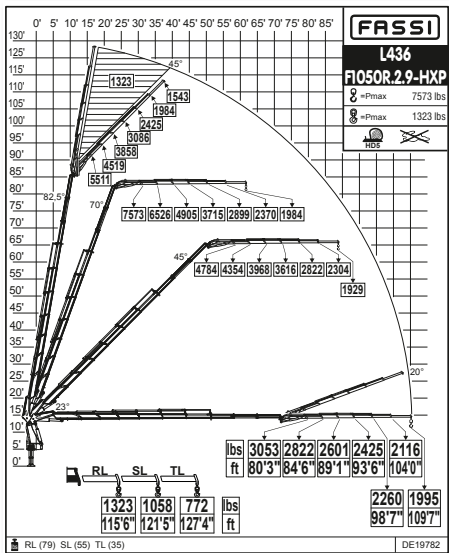
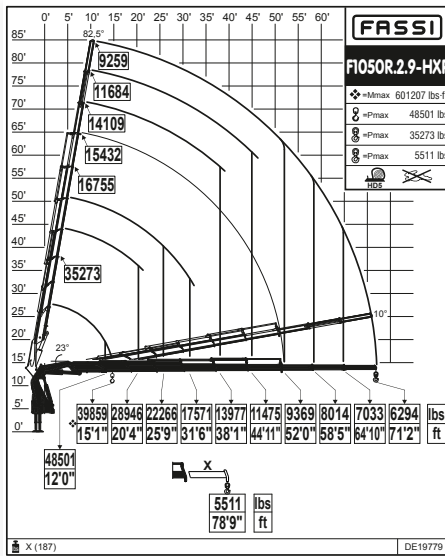
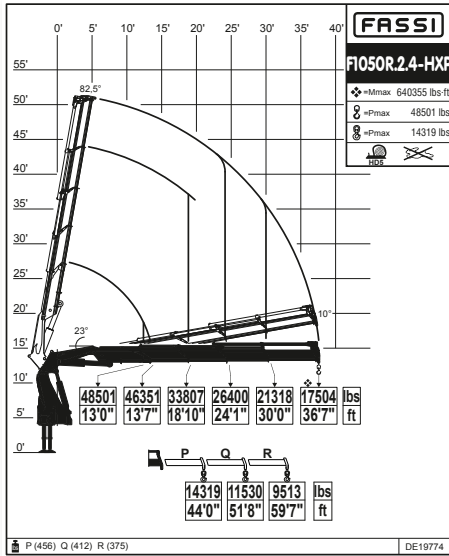


LEADER **IN** INNOVATION













## F1050R.2-HXP TECHNO

Load diagrams - lbs/ft

**FASSI**  
LEADER IN INNOVATION

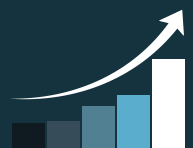


<b>F1050R.2.4</b>	640940	36'7"	22'12"	360°	59005	5004	26,4	66,0	16546	8'3"	5'10"	8'5"
<b>F1050R.2.9</b>	602587	71'2"	56'1"	360°	59005	5004	26,4	66,0	19820	8'4"	6'2"	8'5"
<b>F1050R.2.9 L436</b>	602587	109'7"	94'5"	360°	59005	5004	26,4	66,0	22727	8'4"	6'6"	9'7"

<div><div></div></div>												
	Lifting capacity	Standard reach	Hydraulic extension	Rotation	Rotation torque	Working pressure	Pump capacity	Oil tank capacity	Crane weight	Crane width	Installation width	Crane height

# X Design

## PERFORMANCE + 50%



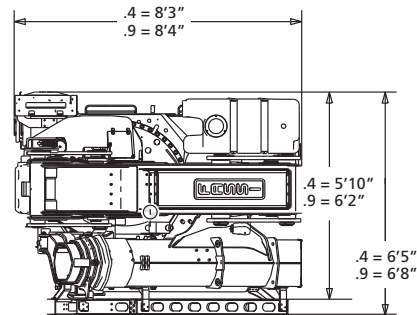
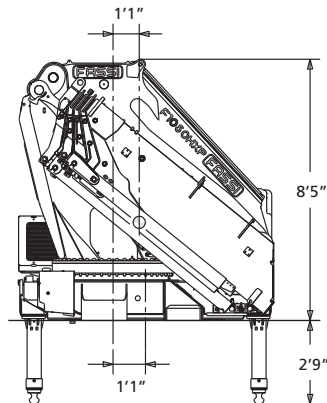
The decagonal section is characterised by increased mechanical performance, motion guides and the inertial stability of vertical loads. The result is that, in comparison to the hexagonal section, lighter solutions can be developed that offer the same mechanical performance, and higher mechanical performance can be achieved with the same weight.

In fact an increase in vertical performance of more than 50% has been achieved.

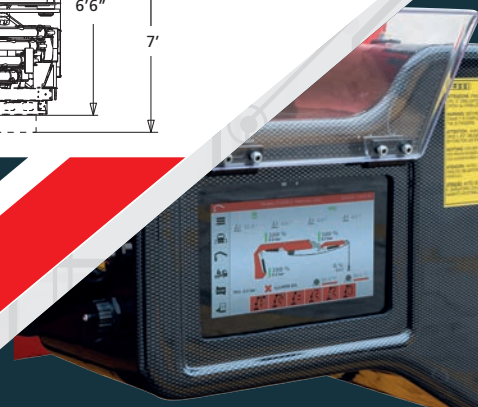
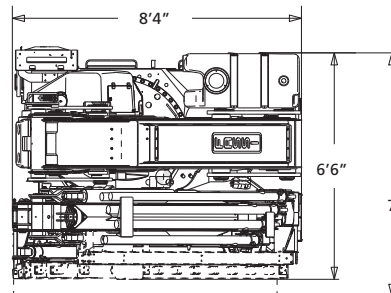
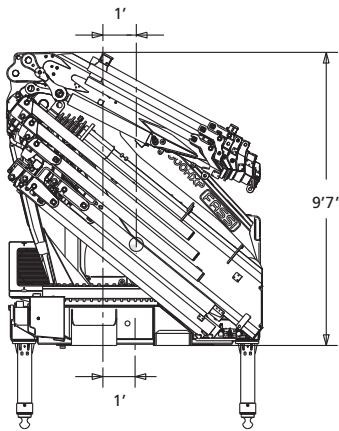
# F1050R.2-HXP TECHNO

- New lifting moment limiting device FX990
- Excellent power-to-weight ratio
- Stability control FSC TECHNO
- Permanent pulley system
- Excellent hydraulic boom
- Jibs L626 and L436

## F1050R.2-HXP TECHNO



## L SERIE



# TECHNO

The main feature of the new **FX990** unit is the significant increase in resources **with three CAN-BUS lines**; one dedicated to sensors, one to controls and one to vehicle connection. The latter relates to the importance of previous developments, from FX-Link to the DBF (Drive by Fassi) function for the remote control of the truck via the crane's V7 radio controller. In addition, **two Ethernet lines** further **extend connectivity and processing power**, another first.

# Lifting Tomorrow



**LEADER IN INNOVATION**



FASSI GRU S.p.A.  
Via Roma, 110  
24021 Albino (Bergamo) ITALY  
Tel +39 035 776400  
Fax +39 035 755020  
[www.fassi.com](http://www.fassi.com)  
[fassi@fassi.com](mailto:fassi@fassi.com)

COMPANY WITH  
MANAGEMENT SYSTEM  
CERTIFIED BY DNV GL  
= ISO 9001 =  
= ISO 14001 =