




MARINE SERIE



The background image is a composite. The top half shows a black hydraulic crane arm extending from a building, lifting a green netted load. The building has ornate, light-colored stone or plasterwork with arched windows and balconies. The bottom half shows a large orange and black ship's hull with a white buoy attached by a red rope. A red crane arm is visible on the right side of the ship.

A complete range for the requirements of harbours, shipyards, marine farms and vessels

The unique expertise gathered over fifty years of designing and constructing more than 200,000 hydraulic cranes is the well-informed experience that Fassi cranes brings to the many lifting requirements of a marine environment, be they in the port or shipyard. Fassi solutions cover a complete range that can withstand the ravages of a sea environment over time and that are suitable for logistic and environmental situations where the movement of loads requires speed, precision, manoeuvrability and safe operation.

GENERAL INFORMATION

LIGHT DUTY CRANES

page 10 - 15



LIFTING CAPACITY from 11 kNm to 120 kNm

MAX LOAD: from 995 kg to 5400 kg

MAX HYDRAULIC OUTREACH: from 2,00 m to 12,05 m (with hydraulic extension*)

WEIGHT: from 145 kg to 1390 kg

WORKING PRESSURE: from 180 bar to 310 bar

WINCH: V5 (500 daN) - V15 (1500 daN)

MEDIUM DUTY CRANES

page 16 - 21



LIFTING CAPACITY from 128 kNm to 335 kNm

MAX LOAD: from 5730 kg to 9500 kg

MAX HYDRAULIC OUTREACH: from 14,70 m to 20,90 m (with hydraulic extension*)

WEIGHT: from 1640 kg to 4660 kg

WORKING PRESSURE: from 280 bar to 330 bar

WINCH: V9 (900 daN) - V30 (3000 daN)

HEAVY DUTY CRANES

page 22 - 30



LIFTING CAPACITY from 365 kNm to 1350 kNm

MAX LOAD: from 9500 kg to 30000 kg

MAX HYDRAULIC OUTREACH: from 20,90 m to 31,00 m (with hydraulic extension*)

WEIGHT: from 4080 kg to 15865 kg

WORKING PRESSURE: from 310 bar to 340 bar

WINCH: V20 (2000 daN) - V50 (5000 daN)



*optional

RACK AND PINION CRANES IN DETAILS

MARINE TREATMENT

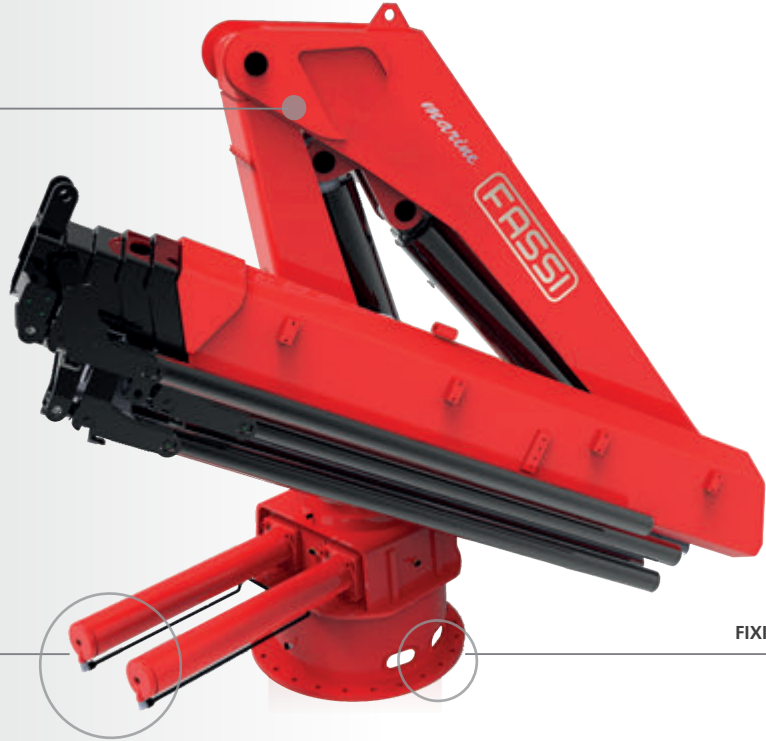
Corrosion resistance standard ASTM B117

SPECIAL PROTECTION 240 µm

RELIABLE IN EVERY ASPECT

High resistance to extreme stresses. One of Fassi cranes' strengths can be found in the monolithic base structure and the column, made of molten cast iron and steel. The accuracy in the welding processes is another example of world-class value which forms part of the reliability of Fassi's products.

DOUBLE RACK AND PINION



FIXING PLATE

Rack and pinion cranes in details



DOUBLE RACK AND PINION SYSTEM

The base with a double rack makes it possible to double the slewing torque, without increasing slewing pressure.



FLEXIBLE PIPES FROM CONNECTING PLATE

A more versatile installation: the length of the pipes can be adapted to the customer's needs.



EASY TO INSTALL

Distributor with levers and controls fixed on a detachable console for easy installation.



ROTATION CYLINDER PIPING

Pipes positioned underneath the rotation cylinders to avoid interference with load handling.

TURNTABLE CRANES IN DETAILS

MARINE TREATMENT

Corrosion resistance standard ASTM B117

SPECIAL PROTECTION 240 µm

RELIABLE IN EVERY ASPECT

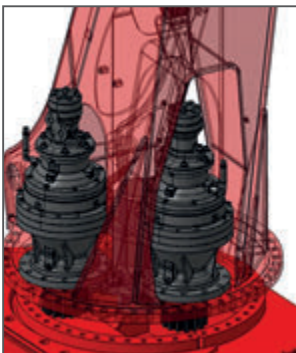
High resistance to extreme stresses. One of Fassi cranes' strengths can be found in the monolithic base structure and the column, made of molten cast iron and steel. The accuracy in the welding processes is another example of world-class value which forms part of the reliability of Fassi's products.

360° CONTINUOUS ROTATION
BY MEANS OF HYDRAULIC MOTOR



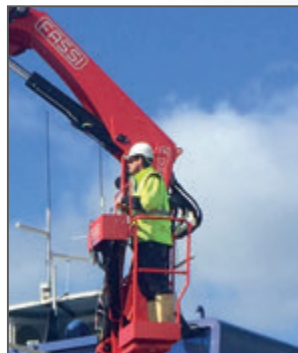
MARINE WATER RESISTANT CASING

Turntable cranes in details



SLEWING SYSTEM

Continuous rotation with double roller and ball guide turntable and motoreducer, designed for intensive use.



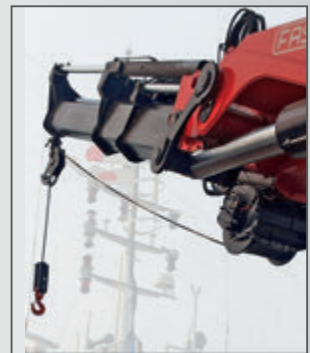
STAND-UP CONTROL STATION

The position of safety allows the operator complete control when executing specific manoeuvres and lifting operations, the ergonomic positioning of levers delivers ease of use and comfortable operation.



RADIO REMOTE CONTROLS

Radio remote controls of digital generation, to have an absolute operational control of the crane and able to communicate with the operator.

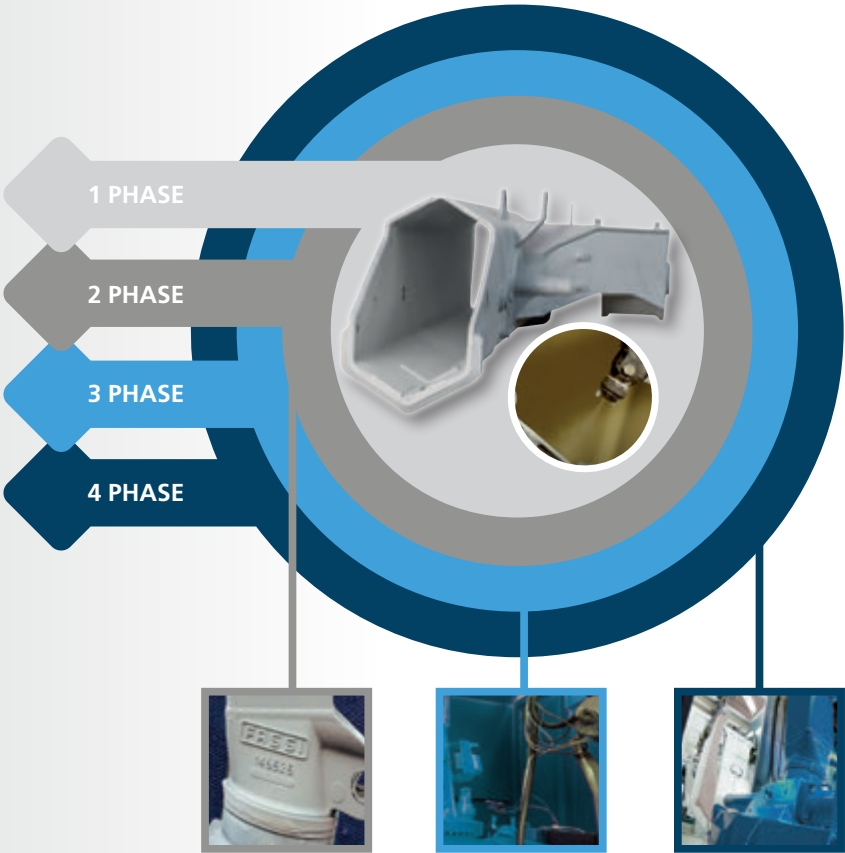


WINCHES

Cable-operated lifting device equipped with an exclusive, patented mechanical, torque and end stop limiter system which avoids the risks resulting from direct and indirect overload applied to the winch itself. Anti-revolving cable and cable guide pulley to make easy the aligned winding of the cable on the winch drum.

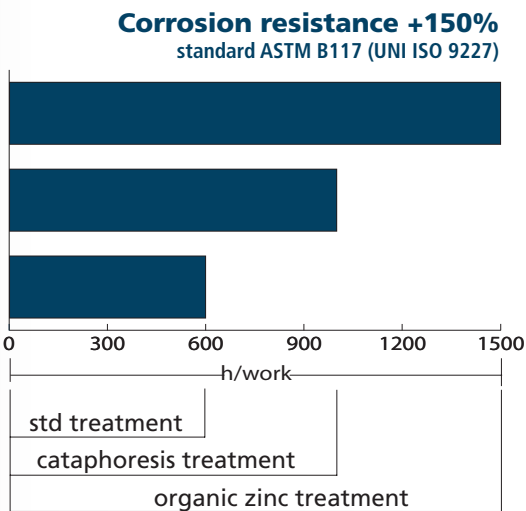
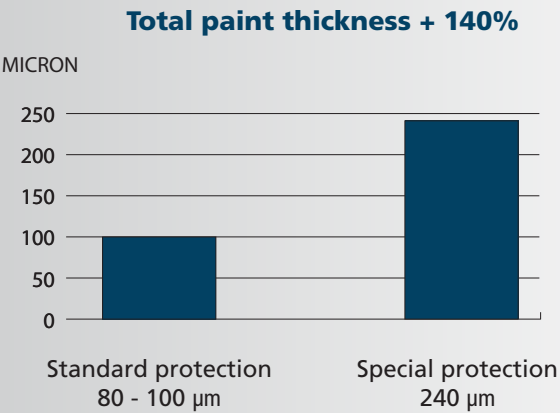
MARINE TREATMENT - 4 PHASES OF PAINTING

- 1 PHASE
Sandblasting degree A Sa 2 ½ and application of 70 µm organic zinc
- 2 PHASE
Double coat of bi-component epoxy primer 100 µm
- 3 PHASE
Dual coat of polyurethane glaze finish 70 µm
- 4 PHASE
Final baking



Each Fassi crane is provided with the best possible protection in order to face the most extreme working conditions of the marine environment, while maintaining its high standards of performance.

Total paint thickness



TOTAL PAINT THICKNESS - COMPONENTS



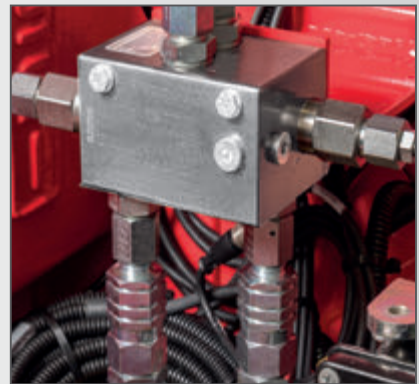
RODS

The rods of the inner and outer rams are nickel treated ($\geq 20 \mu\text{m}$) + chromium ($\geq 40 \mu\text{m}$).
The rods of the boom extension rams have a dual chromium thickness ($> 40 \mu\text{m}$).



ROTATION CYLINDERS

The rotation cylinders are treated with dual chromium plating of the inner part with a coating thickness $> 40 \mu\text{m}$.



ALLUMINIUM VALVES

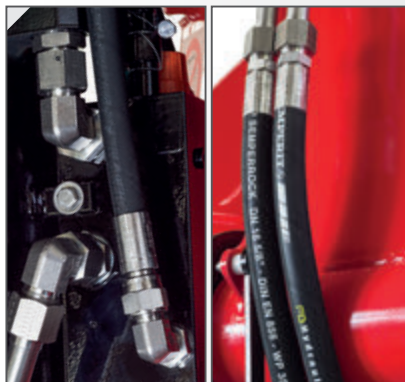
The aluminium valves undergo an anodising treatment while those in steel are fully painted.

Total paint thickness - components



PINS

Pins are completely protected thanks to hardened chemical nickel plating (thickness $\geq 40 \mu\text{m}$).



FITTINGS AND HOSES

Standard zinc coating processes. Can be supplied on request in stainless steel.



PIPES

Special Zistaplex treatment, made to obtain protection excellent anti-corrosion in the hydraulic connection technique. Can be supplied on request in stainless steel.

DOUBLE RACK AND PINION SYSTEM

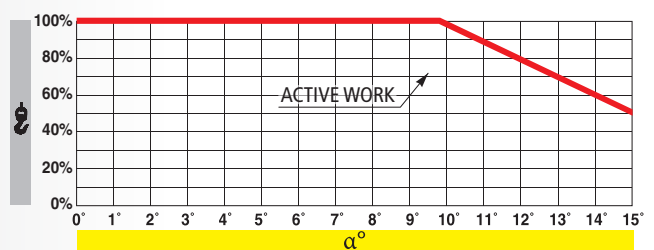
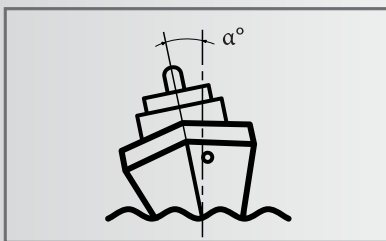
HIGH EFFICIENCY

The latest innovation of the development of a base with a double rack makes it possible to double the slewing torque, without increasing slewing pressure. This results in an improvement of performance when the crane is at an angle, as is often the case out on the water. Cranes fitted with this system are in fact capable of exceeding the 5-degree inclination limit and of handling loads in rotation up to approximately 10°. Beyond 10°, the load that can be handled reduces progressively, reaching a reduction of approximately 50% at a 15° inclination.



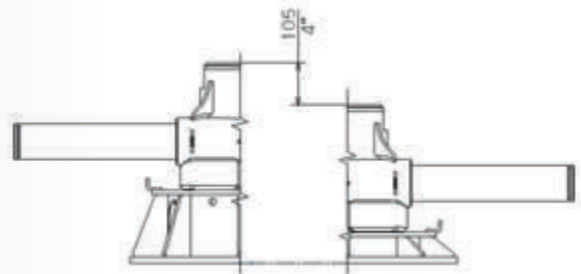
- ✓ **Double the slewing torque**
- ✓ **Improvement of performance when the crane is at an angle**
- ✓ **Modular configuration**

Specification



Available as an option from the crane F40B.0 to the F215A.0
For further information please consult the data sheets available on www.fassitech.com

The height of the base with double rack have been set out in such a way as to produce a crane with a similar height to that of the crane with a standard rotation system. However, the design of this modular conguration of the bases makes it possible for Fassi to offer the option, on request, of lowered or raised bases that allow for reduced or increased overall height of the crane.



QUALITY - CERTIFIED STANDARDS

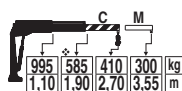


Every phase of the entire production cycle from design to after-sales service is regulated through written procedure in accordance with the Fassi Group Quality System, which is executed in accordance with the UNI EN ISO 9001 standard certified by the international organization Det Norske Veritas (DNV).

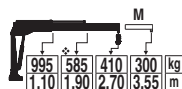


LIGHT DUTY CRANES

M10A.11



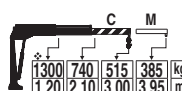
M10A.12



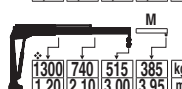
MICRO M10A - TECHNICAL DATA

Lifting capacity	1,12 tm
Rotation arc	325°
Rotation torque	1,9 kNm
Working pressure	18,0 MPa
Pump capacity	6 l/m
Weight	145 kg
Winch*	V5

M15A.11



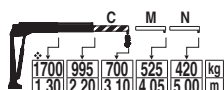
M15A.12



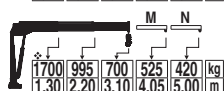
MICRO M15A - TECHNICAL DATA

Lifting capacity	1,53 tm
Rotation arc	325°
Rotation torque	1,9 kNm
Working pressure	18,0 MPa
Pump capacity	6 l/m
Weight	190 kg
Winch*	V5

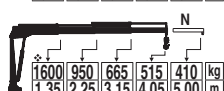
M20A.11



M20A.12



M20A.13



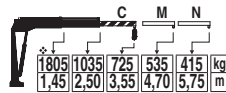
MICRO M20A - TECHNICAL DATA

Lifting capacity	2,24 tm
Rotation arc	325°
Rotation torque	3,4 kNm
Working pressure	18,0 MPa
Pump capacity	8 l/m
Weight	195 kg
Winch*	V5

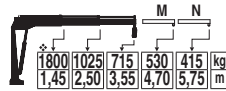


LIGHT DUTY CRANES

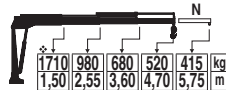
M25A.11



M25A.12



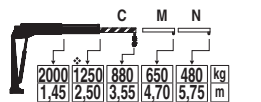
M25A.13



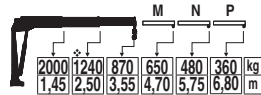
MICRO M25A - TECHNICAL DATA

Lifting capacity	2,65 tm
Rotation arc	325°
Rotation torque	3,4 kNm
Working pressure	15,5 MPa
Pump capacity	8 l/m
Weight	215 kg
Winch*	V5

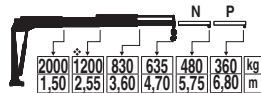
M30A.11



M30A.12



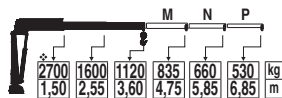
M30A.13



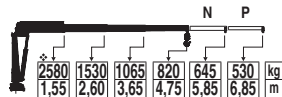
MICRO M30A - TECHNICAL DATA

Lifting capacity	3,06 tm
Rotation arc	325°
Rotation torque	3,4 kNm
Working pressure	18,0 MPa
Pump capacity	8 l/m
Weight	215 kg
Winch*	V5

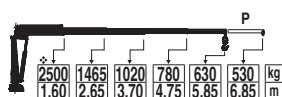
M40A.1.12



M40A.1.13



M40A.1.14



MICRO M40A - TECHNICAL DATA

Lifting capacity	4,08 tm
Rotation arc	337°
Rotation torque	4,2 kNm
Working pressure	23,0 MPa
Pump capacity	10-15 l/m
Weight	330 kg
Winch*	V5



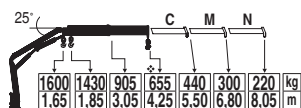
M max = ❖

The weight of the crane refers to standard model

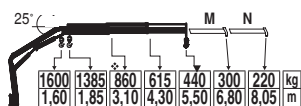
Telescopic manual extensions are optional **M N P**
*optional

LIGHT DUTY CRANES

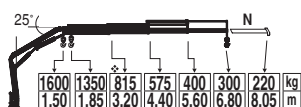
F32A.0.21



F32A.0.22



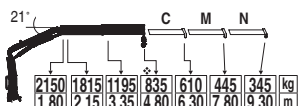
F32A.0.23



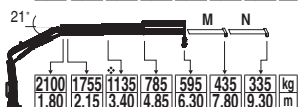
F32A.0 - TECHNICAL DATA

Lifting capacity	2,75 tm
Rotation arc	370°
Rotation torque	4,0 kNm
Working pressure	26,5 MPa
Pump capacity	10 l/m
Weight	390 kg
Winch*	V5

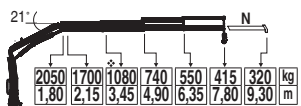
F40B.0.21



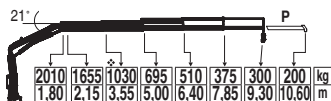
F40B.0.22



F40B.0.23

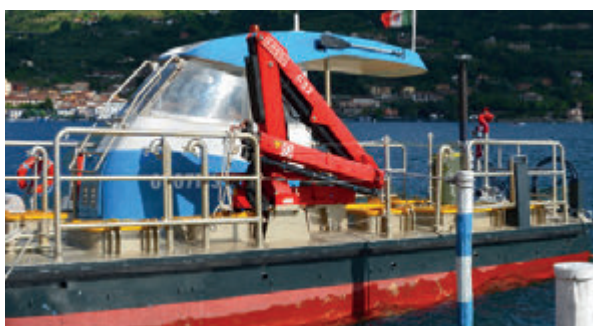


F40B.0.24



F40B.0 - TECHNICAL DATA

Lifting capacity	3,98 tm
Rotation arc	370°
Rotation torque	5,3 kNm
Working pressure	26,5 MPa
Pump capacity	15 l/m
Weight	505 kg
Winch*	V5



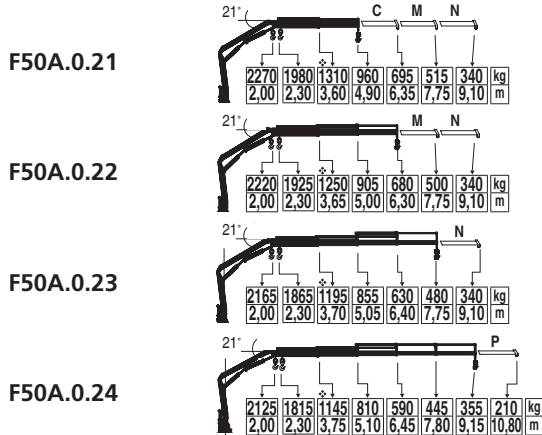
Telescopic manual extensions are optional

*optional

The weight of the crane refers to standard model

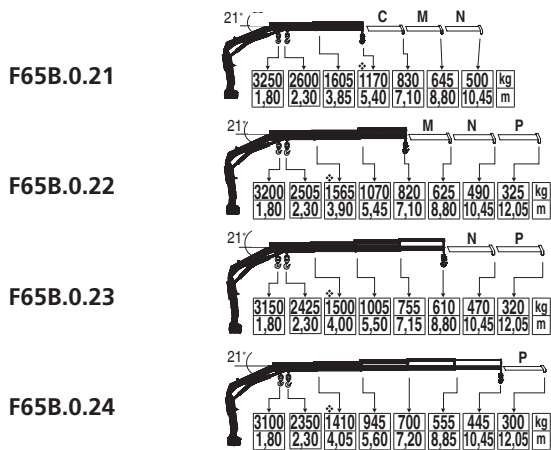
✱ = M max

LIGHT DUTY CRANES



F50A.0 - TECHNICAL DATA

Lifting capacity	4,69 tm
Rotation arc	370°
Rotation torque	7,6 kNm
Working pressure	25,5 MPa
Pump capacity	16 l/m
Weight	540 kg
Winch*	V5 - V6 - V9 - V15



F65B.0 - TECHNICAL DATA

Lifting capacity	6,32 tm
Rotation arc	400°
Rotation torque	7,8 kNm
Working pressure	32 MPa
Pump capacity	20 l/m
Weight	610 kg
Winch*	V6



M max = ❖

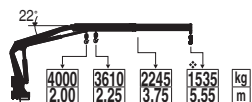
The weight of the crane refers to standard model

Telescopic manual extensions are optional

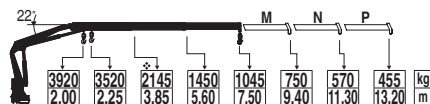
C M N P
*optional

LIGHT DUTY CRANES

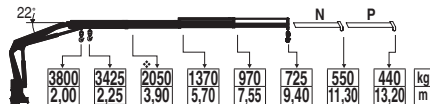
F85B.0.21



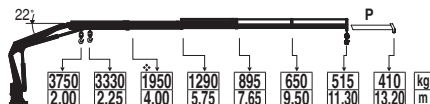
F85B.0.22



F85B.0.23



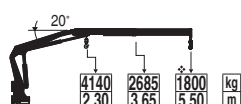
F85B.0.24



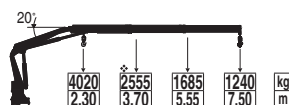
F85B.0 - TECHNICAL DATA

Lifting capacity	8,56 tm
Rotation arc	400°
Rotation torque	11,7 kNm
Working pressure	31 MPa
Pump capacity	30-40 l/m
Weight	790 kg
Winch*	V9

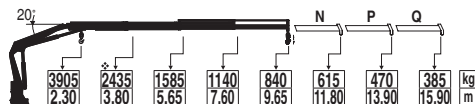
F110B.0.21



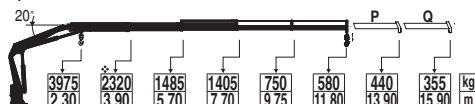
F110B.0.22



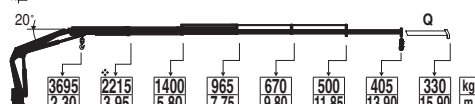
F110B.0.23



F110B.0.24



F110B.0.25



F110B.0 - TECHNICAL DATA

Lifting capacity	9,89 tm
Rotation arc	410°
Rotation torque	17,7 kNm
Working pressure	30,5 MPa
Pump capacity	30-40 l/m
Weight	970 kg
Winch*	V9 - V15

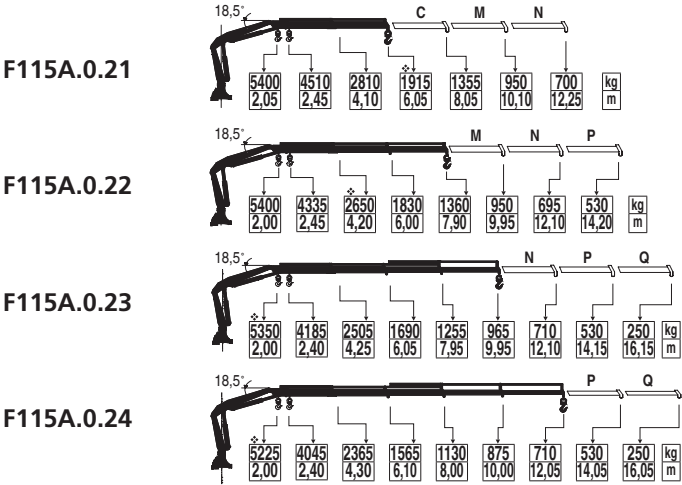


C M N P Q Telescopic manual extensions are optional
*optional

The weight of the crane refers to standard model

❖ = M max

LIGHT DUTY CRANES



F115A.0 - TECHNICAL DATA	
Lifting capacity	11,62 tm
Rotation arc	390°
Rotation torque	17,6 kNm
Working pressure	30,5 MPa
Pump capacity	30 l/m
Weight	1415 kg
Winch*	V9 - V15



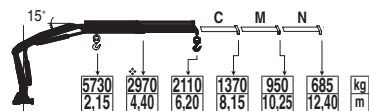
M max = ❖

The weight of the crane refers to standard model

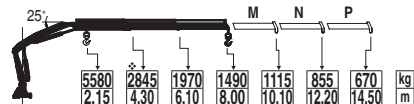
Telescopic manual extensions are optional **C M N P Q**
*optional

MEDIUM DUTY CRANES

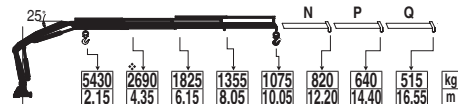
F135A.0.21



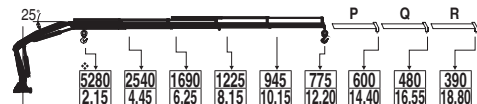
F135A.0.22



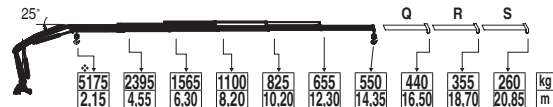
F135A.0.23



F135A.0.24



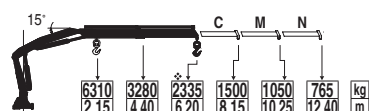
F135A.0.25



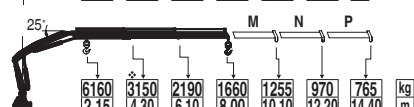
F135A.0 - TECHNICAL DATA

Lifting capacity	13,05 tm
Rotation arc	390°
Rotation torque	21,5 kNm
Working pressure	28,5 MPa
Pump capacity	40 l/m
Weight	1590 kg
Winch*	V9 - V15

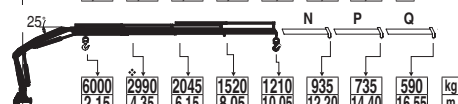
F155A.0.21



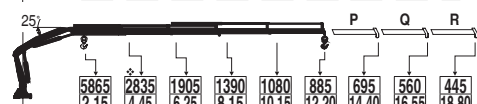
F155A.0.22



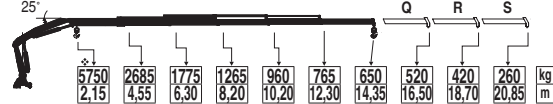
F155A.0.23



F155A.0.24

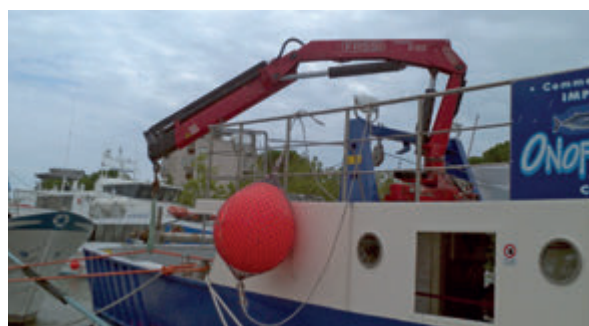


F155A.0.25



F155A.0 - TECHNICAL DATA

Lifting capacity	14,48 tm
Rotation arc	390°
Rotation torque	21,5 kNm
Working pressure	29,0 MPa
Pump capacity	40 l/m
Weight	1630 kg
Winch*	V9 - V15



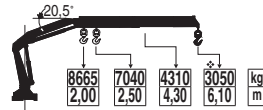
C M N P Q R S Telescopic manual extensions are optional
*optional

The weight of the crane refers to standard model

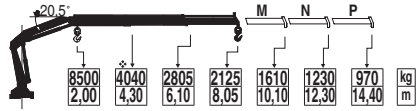
❖ = M max

MEDIUM DUTY CRANES

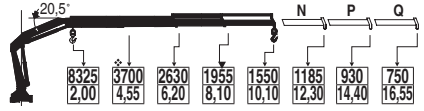
F195A.0.21



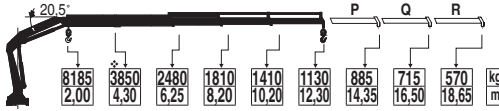
F195A.0.22



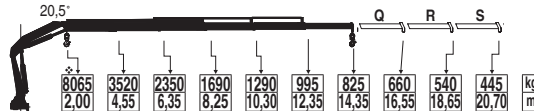
F195A.0.23



F195A.0.24



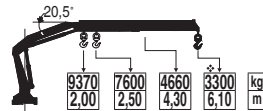
F195A.0.25



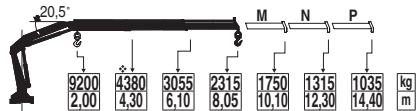
F195A.0 - TECHNICAL DATA

Lifting capacity	18,65 tm
Rotation arc	400°
Rotation torque	30,8 kNm
Working pressure	28,0 MPa
Pump capacity	45 l/m
Weight	1650 kg
Winch*	V15 - V20

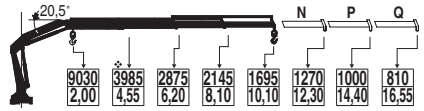
F215A.0.21



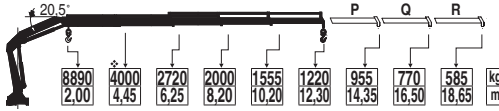
F215A.0.22



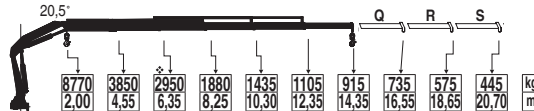
F215A.0.23



F215A.0.24



F215A.0.25



F215A.0 - TECHNICAL DATA

Lifting capacity	20,08 tm
Rotation arc	400°
Rotation torque	33,5 kNm
Working pressure	30,0 MPa
Pump capacity	45 l/m
Weight	1650 kg
Winch*	V9 - 15 - V20



M max = ❖

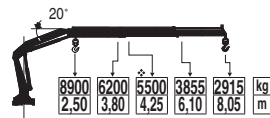
The weight of the crane refers to standard model

Telescopic manual extensions are optional

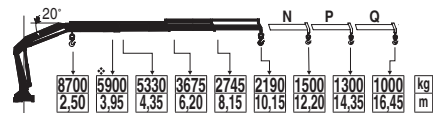
C M N P Q R S
*optional

MEDIUM DUTY CRANES

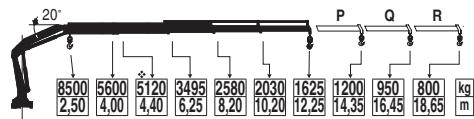
F245A.0.22



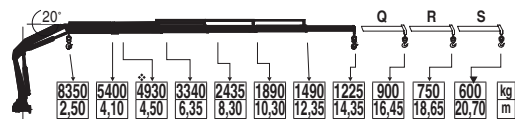
F245A.0.23



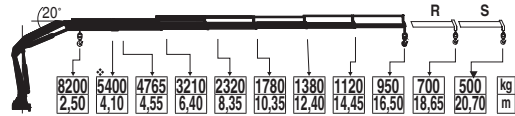
F245A.0.24



F245A.0.25



F245A.0.26



F245A.0 - TECHNICAL DATA

Lifting capacity	23,55 tm
Rotation arc	420°
Rotation torque	37,1 kNm
Working pressure	30,5 MPa
Pump capacity	45-65 l/m
Weight	2400 kg
Winch*	V15 - V20



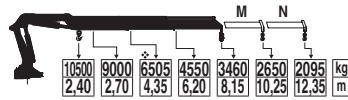
M N P Q R S Telescopic manual extensions are optional
 *optional

The weight of the crane refers to standard model

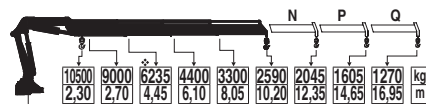
❖ = M max

MEDIUM DUTY CRANES

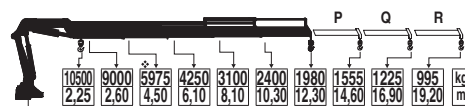
F295A.2.22



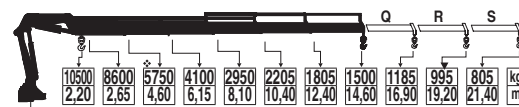
F295A.2.23



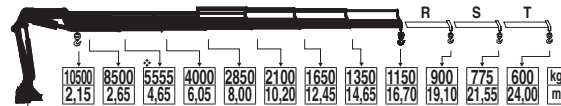
F295A.2.24



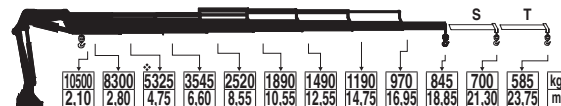
F295A.2.25



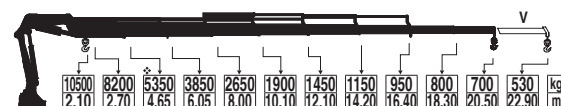
F295A.2.26



F295A.2.27

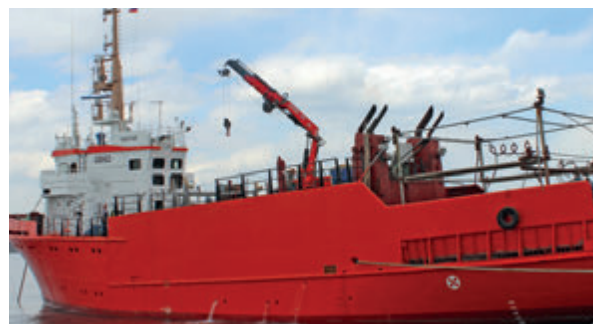


F295A.2.28



F295A.2 - TECHNICAL DATA

Lifting capacity	28,34 tm
Rotation arc	400°
Rotation torque	41,0 kNm
Working pressure	31,0 MPa
Pump capacity	60-80 l/m
Weight	3250 kg
Winch*	V20 - V30



M max = ❖

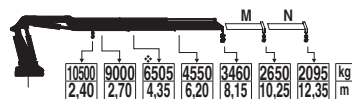
The weight of the crane refers to standard model

Telescopic manual extensions are optional

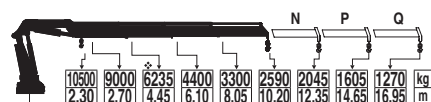
M N P Q R S T V
*optional

MEDIUM DUTY CRANES

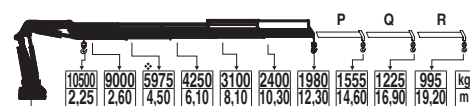
F295RA.2.22



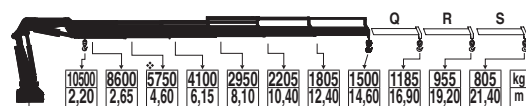
F295RA.2.23



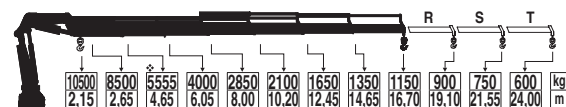
F295RA.2.24



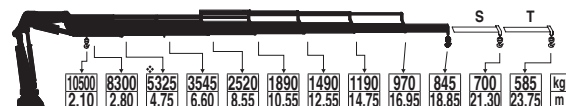
F295RA.2.25



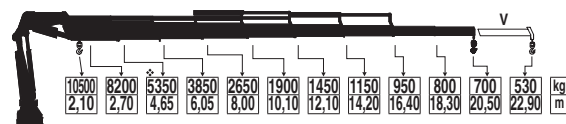
F295RA.2.26



F295RA.2.27



F295RA.2.28



F295RA.2 - TECHNICAL DATA

Lifting capacity	28,34 tm
Rotation arc	360° cont.
Rotation torque	25 kNm
Working pressure	31,0 MPa
Pump capacity	60-80 l/m
Weight	3460 kg
Winch*	V15 - V20 - V30



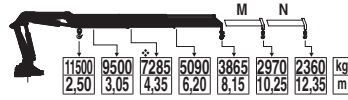
M N P Q R S T V W Telescopic manual extensions are optional
*optional

The weight of the crane refers to standard model

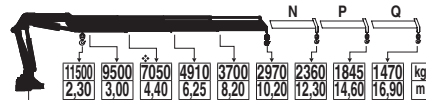
❖ = M max

MEDIUM DUTY CRANES

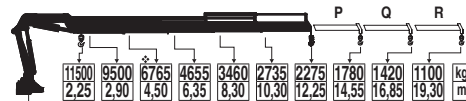
F335A.2.22



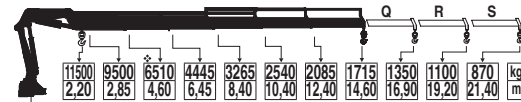
F335A.2.23



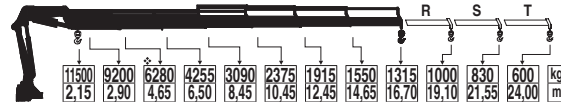
F335A.2.24



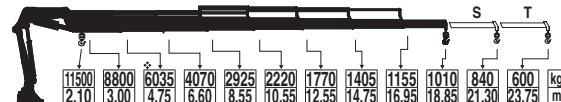
F335A.2.25



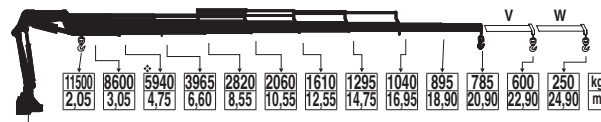
F335A.2.26



F335A.2.27



F335A.2.28



F335A.2 - TECHNICAL DATA

Lifting capacity 31,70 tm

Rotation arc 400°

Rotation torque 47,5 kNm

Working pressure 31,0 MPa

Pump capacity 60-80 l/m

Weight 3350 kg

Winch* V20 - V30



M max = ❖

The weight of the crane refers to standard model

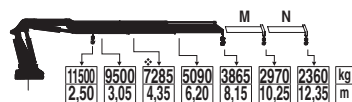
Telescopic manual extensions are optional

M N P Q R S T V W

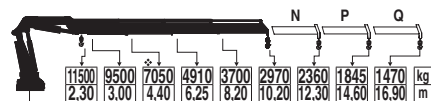
*optional

HEAVY DUTY CRANES

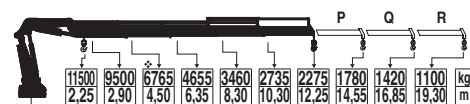
F335RA.2.22



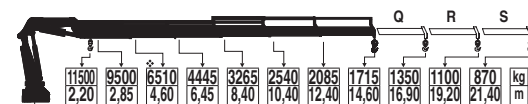
F335RA.2.23



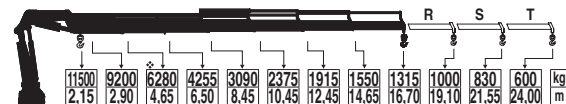
F335RA.2.24



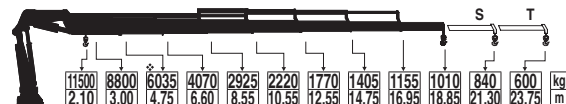
F335RA.2.25



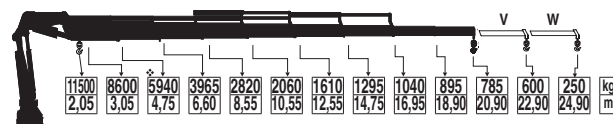
F335RA.2.26



F335RA.2.27



F335RA.2.28



F335RA.2 - TECHNICAL DATA

Lifting capacity	31,70 tm
Rotation arc	360° cont.
Rotation torque	25 kNm
Working pressure	31,0 MPa
Pump capacity	60-80 l/m
Weight	3510 kg
Winch*	V15 - V20 - V30



M N P Q R S T V W

Telescopic manual extensions are optional

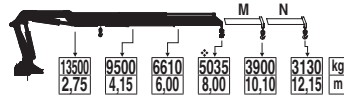
*optional

The weight of the crane refers to standard model

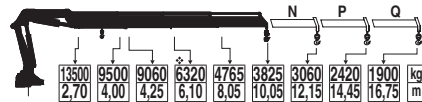
❖ = M max

HEAVY DUTY CRANES

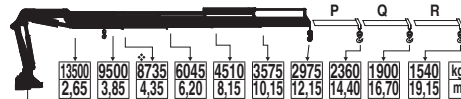
F415A.2.22



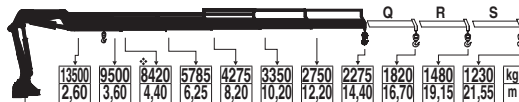
F415A.2.23



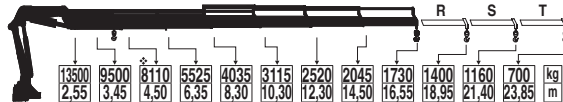
F415A.2.24



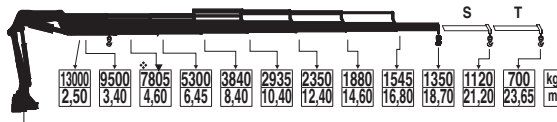
F415A.2.25



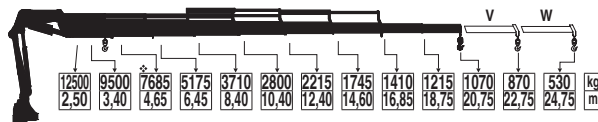
F415A.2.26



F415A.2.27



F415A.2.28



F415A.2 - TECHNICAL DATA

Lifting capacity	40,27 tm
Rotation arc	430°
Rotation torque	47,5 kNm
Working pressure	31,0 MPa
Pump capacity	60-80 l/m
Weight	4200 kg
Winch*	V20 - V30



M max = ❖

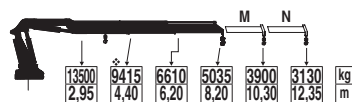
The weight of the crane refers to standard model

Telescopic manual extensions are optional

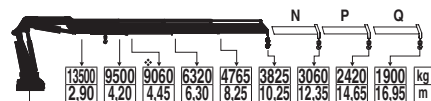
M N P Q R S T V W
*optional

HEAVY DUTY CRANES

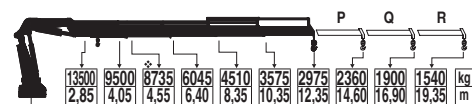
F415RA.2.22



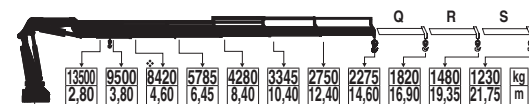
F415RA.2.23



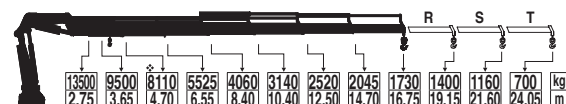
F415RA.2.24



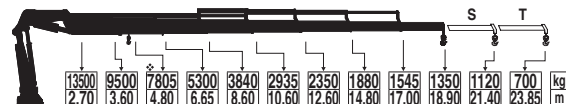
F415RA.2.25



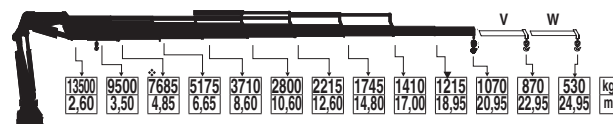
F415RA.2.26



F415RA.2.27



F415RA.2.28



F415RA.2 - TECHNICAL DATA

Lifting capacity	41,39 tm
Rotation arc	360° cont.
Rotation torque	44,1 kNm
Working pressure	31,0 MPa
Pump capacity	60-80 l/m
Weight	4200 kg
Winch*	V20 - V30



M N P Q R S T V W

Telescopic manual extensions are optional

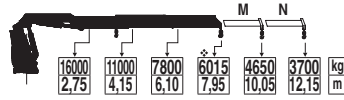
*optional

The weight of the crane refers to standard model

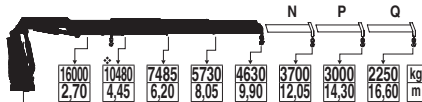
❖ = M max

HEAVY DUTY CRANES

F515RA.2.22



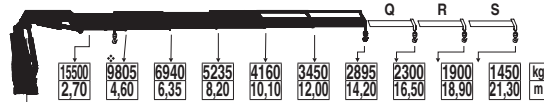
F515RA.2.23



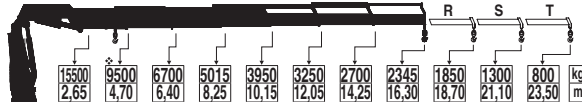
F515RA.2.24



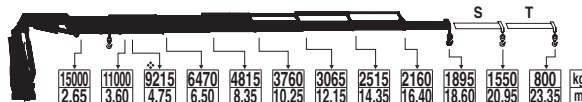
F515RA.2.25



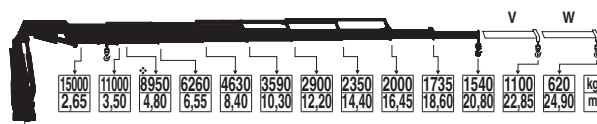
F515RA.2.26



F515RA.2.27



F515RA.2.28



F515RA.2 - TECHNICAL DATA

Lifting capacity	47,81 tm
Rotation arc	360° cont.
Rotation torque	44,1 kNm
Working pressure	33,5 MPa
Pump capacity	70-80 l/m
Weight	4350 kg
Winch*	V20 - V30



M max = ❖

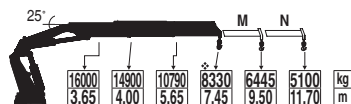
The weight of the crane refers to standard model

Telescopic manual extensions are optional

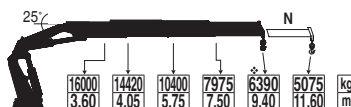
M N P Q R S T V W
*optional

HEAVY DUTY CRANES

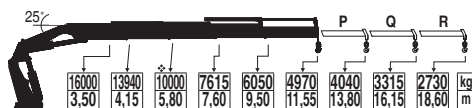
F660RA.2.22



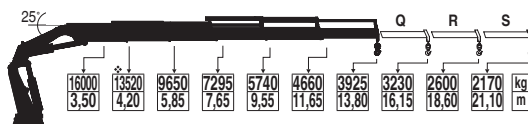
F660RA.2.23



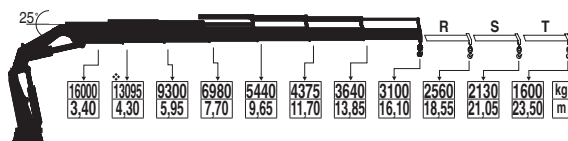
F660RA.2.24



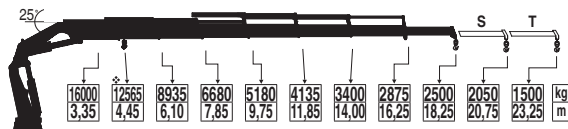
F660RA.2.25



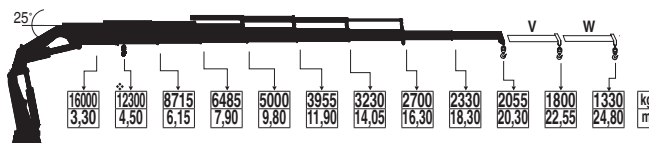
F660RA.2.26



F660RA.2.27



F660RA.2.28



F660RA.2 - TECHNICAL DATA

Lifting capacity	56,78 tm
Rotation arc	360° cont.
Rotation torque	45,0 kNm
Working pressure	32,0 MPa
Pump capacity	70-80 l/m
Weight	5135 kg
Winch*	V20 - V30



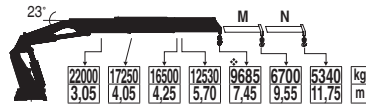
M N P Q R S T V W Telescopic manual extensions are optional
*optional

The weight of the crane refers to standard model

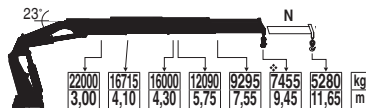
❖ = M max

HEAVY DUTY CRANES

F800RA.2.22



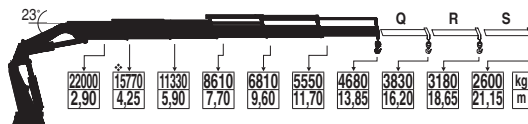
F800RA.2.23



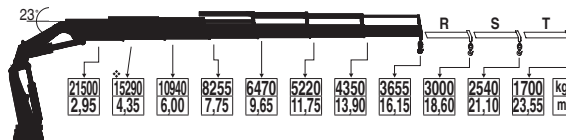
F800RA.2.24



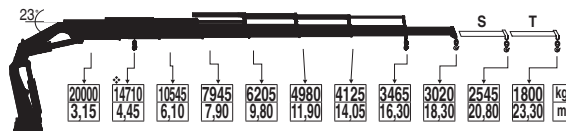
F800RA.2.25



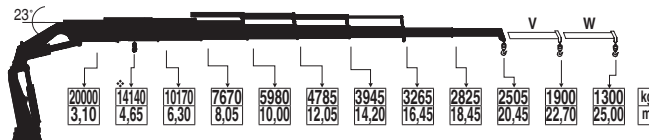
F800RA.2.26



F800RA.2.27



F800RA.2.28



F800RA.2 - TECHNICAL DATA

Lifting capacity	72,17 tm
Rotation arc	360° cont.
Rotation torque	90,0 kNm
Working pressure	33,0 MPa
Pump capacity	80-100 l/m
Weight	6100 kg
Winch *	V20 - V30



M max = ❖

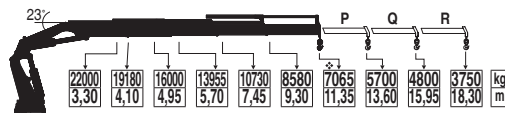
The weight of the crane refers to standard model

Telescopic manual extensions are optional

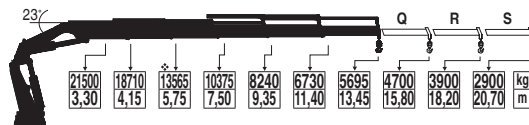
M N P Q R S T V W
*optional

HEAVY DUTY CRANES

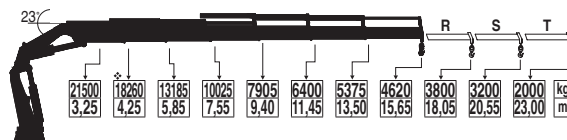
F950RA.2.24



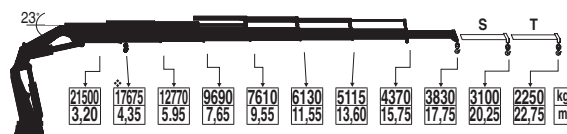
F950RA.2.25



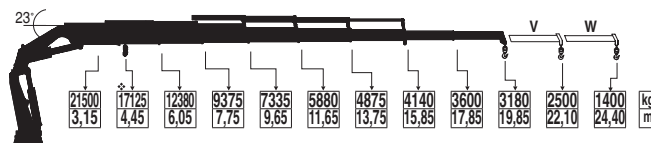
F950RA.2.26



F950RA.2.27



F950RA.2.28



F950RA.2 - TECHNICAL DATA

Lifting capacity	80,22 tm
Rotation arc	360° cont.
Rotation torque	80,0 kNm
Working pressure	32,5 MPa
Pump capacity	80-100 l/m
Weight	7360 kg
Winch *	V20 - V30 - V40

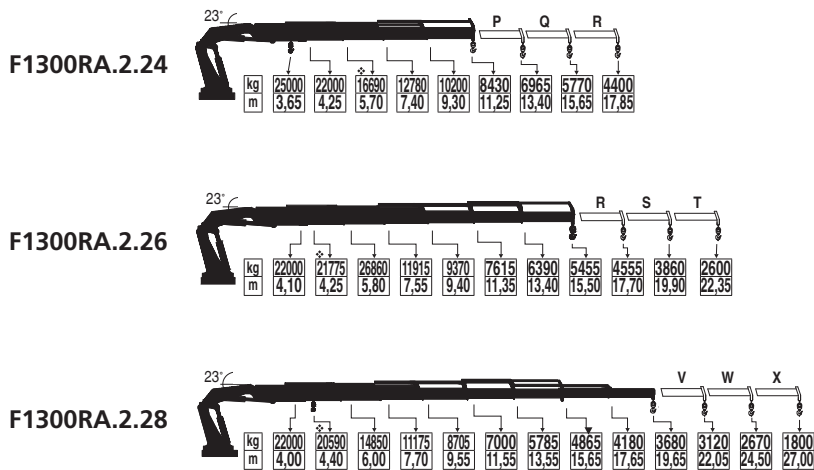


P Q R S T V W Telescopic manual extensions are optional
*optional

The weight of the crane refers to standard model

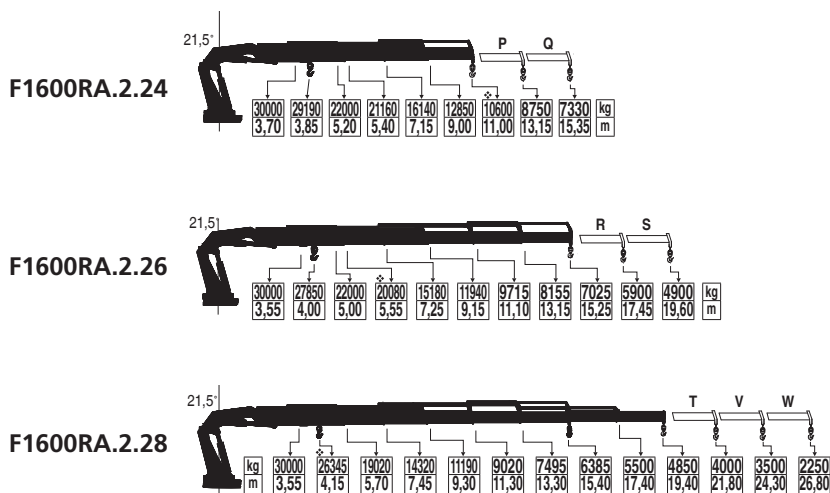
❖ = M max

HEAVY DUTY CRANES



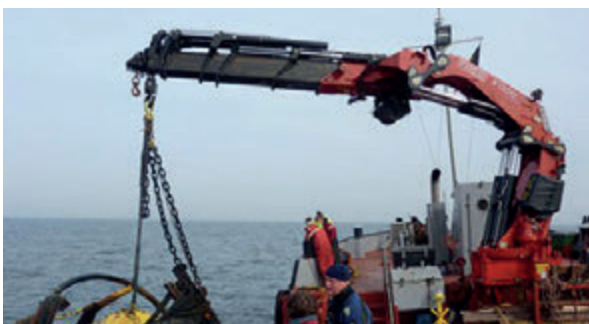
F1300RA.2 - TECHNICAL DATA

Lifting capacity	95,11 tm
Rotation arc	360° cont.
Rotation torque	100,0 kNm
Working pressure	33,5 MPa
Pump capacity	90-110 l/m
Weight	9700 kg
Winch *	V20 - V30 - V40



F1600RA.2 - TECHNICAL DATA

Lifting capacity	116,62 tm
Rotation arc	360° cont.
Rotation torque	130,0 kNm
Working pressure	33,5 MPa
Pump capacity	100+100 l/m
Weight	11770 kg
Winch *	V20 - V30 - V40

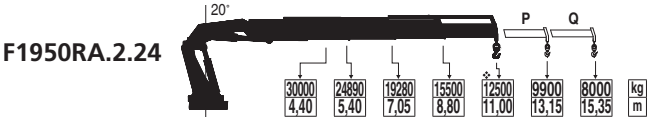


M max = ❖

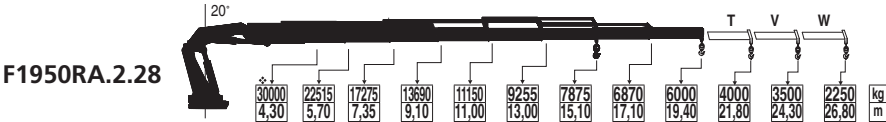
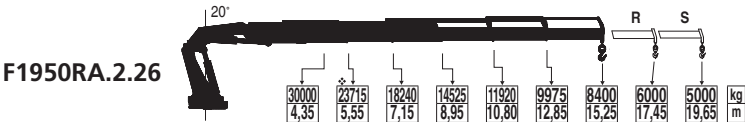
The weight of the crane refers to standard model

Telescopic manual extensions are optional **P Q R S T V W X**
*optional

HEAVY DUTY CRANES



F1950RA.2 - TECHNICAL DATA	
Lifting capacity	137,61 tm
Rotation arc	360° cont.
Rotation torque	130,0 kNm
Working pressure	34,0 MPa
Pump capacity	100+100 l/m
Weight	12700 kg
Winch*	V30 - V40 - V50



P Q R S T V W Telescopic manual extensions are optional
*optional

The weight of the crane refers to standard model

❖ = M max





LEADER IN INNOVATION



FASSI GRU S.p.A.
Via Roma, 110, 24021 Albino (Bergamo) ITALY
T +39 035 776400
www.fassi.com - fassi@fassi.com